

Monitor Desk Mount

MODEL: ASAMM-1025-M

Installation Guide

Welcome

Congratulations on your purchase!

This installation guide tells you all you need to know about using your new BAUHN® product.

Please take special note of any important safety and usage information presented with the  symbol.

All products brought to you by BAUHN® are manufactured to the highest standards of performance and safety and, as part of our philosophy of customer service and satisfaction, are backed by our comprehensive 1 Year Warranty.

Domestic use only: This product is intended for indoor domestic use only. It is not suitable for commercial, industrial or outdoor use. Do not use this product for anything other than its intended purpose, and only use it as described in this guide.

We hope you will enjoy using your purchase for many years to come.

WARNING

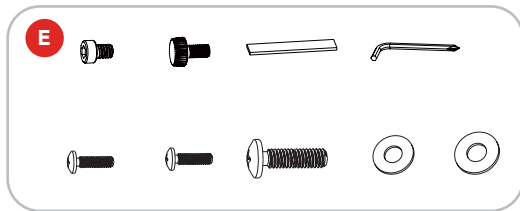
Fixing a monitor to a desk mount requires specialist knowledge. We assume no liability for any injury or material damage incurred due to incorrect assembly or use. Make sure to follow all instructions and if you require professional advice, please consult a relevant tradesperson.

Contents

Welcome	2	Specifications	13
Unpack and Prepare	4	Compliance and Responsible Disposal	13
What's in The Box	4	Warranty Information	14
Parts List	5	Repair and Refurbished	
Product Overview	5	Goods or Parts Notice	15
Installation Pack	6	Support	16
Installation	7		
Applying Pads to the Clamp	7		
Installation	7		
Option A: Clamp Mount	8		
Option B: Grommet Installation	9		
Install Swivel Arm	10		
Install Monitor to the Desk Mount	11		
Managing the Wires and Tools	12		

Unpack and Prepare

What's in The Box



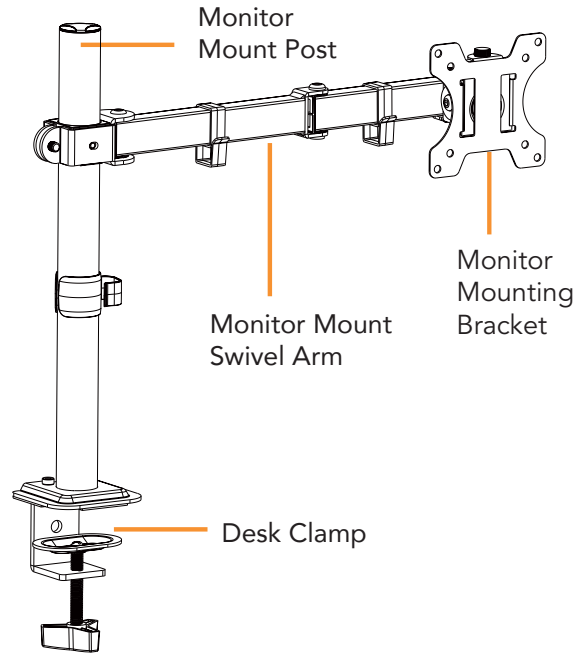
Before setting up your new product, check you have everything:

- A. Monitor Mount Post
- B. Monitor Mount Swivel Arm
- C. Monitor Mounting VESA Plate
- D. Desk Clamp
- E. Installation Pack (see page 6 for information)
- F. Installation Guide
- G. Warranty Certificate
- H. General Safety Warnings

Parts List

Product Overview

- Supports 75 x 75mm & 100 x 100mm VESA mounting holes.
- Suitable for monitors sized 13-32", weighing up to 8kg.
- Suitable for desk thicknesses of between 10 - 50mm.
- Built in cable tidys



Installation Pack

The illustration below shows the contents of the installation pack. These are the parts that you will need to assemble this desk mount. Some parts are not shown at the same scale.



Bolt
M6 x 8mm
(2pcs)



Security bolt
M6 x 12mm
(1pc)



Protective pad
(2pcs)



Allen Key
M5
(1pc)



Bolt
M4 x 10mm
(4pcs)



Bolt
M5 x 10mm
(4pcs)



Bolt
M6 x 12mm
(4pcs)



Washer
ø5
(4pcs)



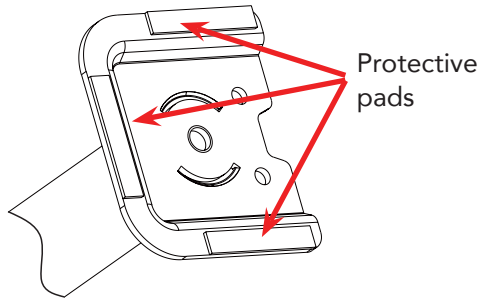
Washer
ø6
(4pcs)

Installation

Applying Pads to the Clamp

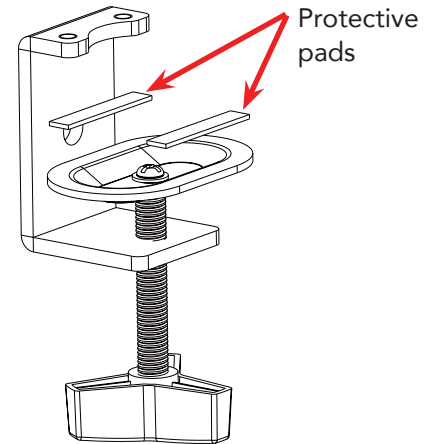
This protects the desk and avoids scratches.

Bottom of Post



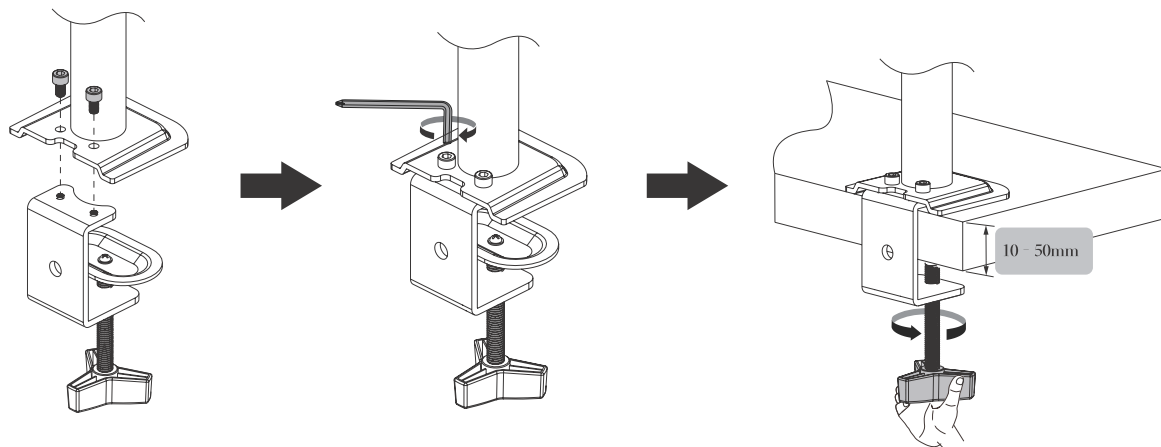
Note: Protective pads on the post have been preinstalled for you.

Bottom of Clamp



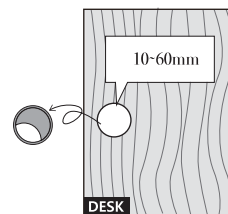
Note: Protective pads for the bottom of the clamp have been provided and we recommended customers use these to protect your desk.

Option A: Clamp Mount (For desks without an existing post hole)

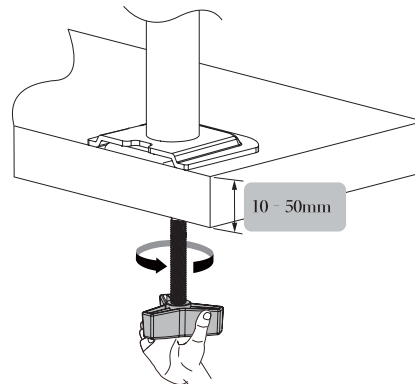
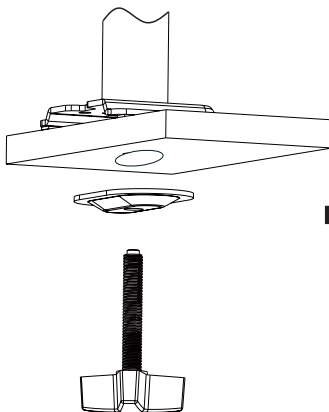
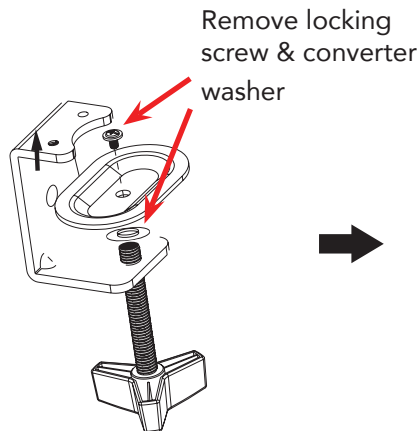


1. Screw desk clamp to the bottom of monitor mount post by tightening (M6 x 8mm, 2pcs) bolts with the Allen Key.
2. Adjust the clamp height to fit your desk. Secure the monitor mount post to the desk by tightening the clamp handle.

Option B: Grommet Installation (For desks with existing post hole)

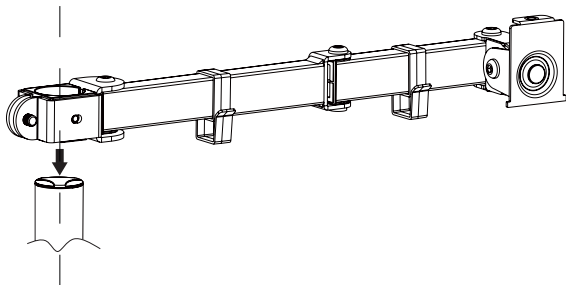


Maximum diameter hole for use with the monitor mount.

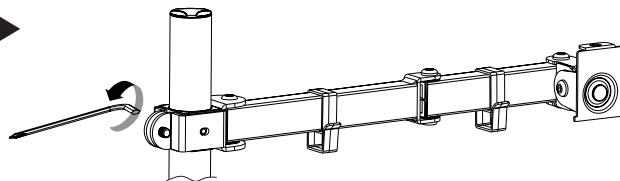


1. If an existing hole has a grommet insert, remove this to ensure a flat surface before installing the desk mount.
2. Disassemble desk clamp by removing the locking screw and converter washer.
3. Position monitor mount post on the mounting surface and then tighten it securely.
4. Keep the locking screw and converter washer for future use.

Installing Swivel Arm

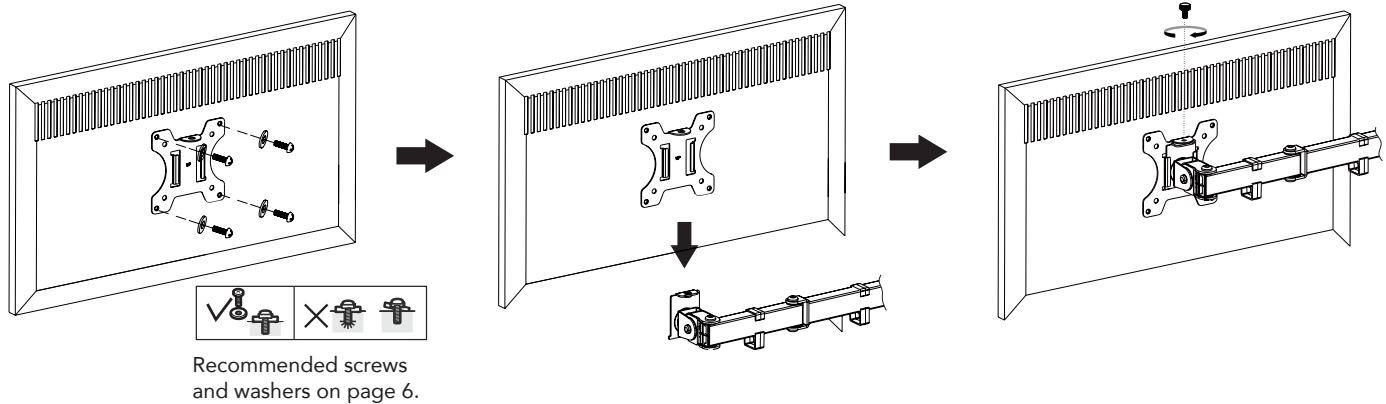


1. Install monitor mount swivel arm to the pole.



2. Fasten the bolt with the supplied allen key.

Install Monitor to the Desk Mount

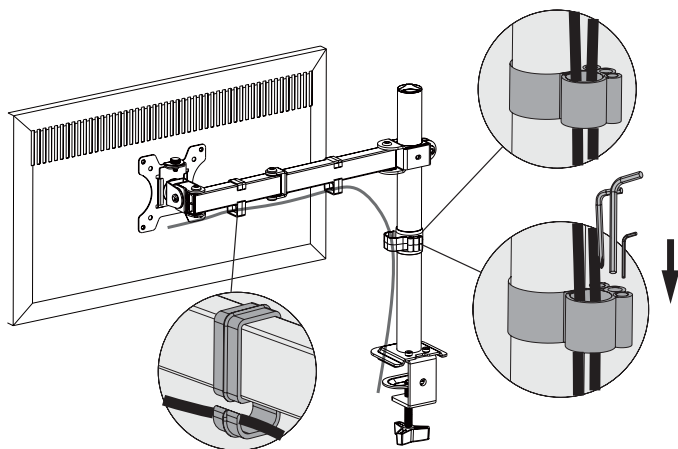


1. Place the monitor face down on a flat surface with a soft cloth underneath.
2. Take the monitor mounting VESA plate and attach it to the monitor using screws and washers provided.
3. Slide the monitor onto the head of the monitor mount swivel arm as shown above.
4. Install the security bolt.

WARNING: Using incorrect screws can damage the monitor.
Ensure to check your monitor manual for the correct size.

WARNING: Make sure the security bolt is secured before rotating the monitor.

Managing Wires and Tools



1. The monitor mount comes with built in cable tidys.
2. Ensure to run cables so they have some free play. This allows for monitor swivel movement.
3. Place the your tools in the storage holes.

Specifications

VESA Support	75 x 75mm, 100 x 100mm
Maximum Load	8kg
Desk Thickness	10-50mm Approx.
Product Weight (including accessories)	1.8kg

Compliance and Responsible Disposal



Packaging

The packaging of your product has been selected from environmentally friendly materials and can usually be recycled. Please ensure these are disposed of correctly. Plastic wrapping can be a suffocation hazard for babies and young children, please ensure all packaging materials are out of reach and are safely disposed of. Please recycle these materials rather than throwing them away

Product

At the end of its working life, do not throw this product out with your household rubbish. An environmentally friendly method of disposal will ensure that valuable raw materials can be recycled. Electrical and electronic items contain materials and substances which, if handled or disposed of incorrectly, could potentially be hazardous to the environment and human health.





BAUHN®

Warranty Information

The product is guaranteed to be free from defects in workmanship and parts for a period of 12 months from the date of purchase. Defects that occur within this warranty period, under normal use and care, will be repaired, replaced or refunded at our discretion, solely at our option with no charge for parts and labour. The benefits conferred by this warranty are in addition to all rights and remedies in respect of the product that the consumer has under the Competition and Consumer Act 2010 and similar state and territory laws.

Our goods come with guarantees that cannot be excluded under the Australian Consumer Law. You are entitled to a replacement or refund for a major failure and to compensation for any other reasonably foreseeable loss or damage. You are also entitled to have the goods repaired or replaced if the goods fail to be of acceptable quality and the failure does not amount to a major failure.





BAUHN®

Repair and Refurbished Goods or Parts Notice

Unfortunately, sometimes faulty products are manufactured, which need to be returned to the supplier for repair.

Please be aware that if your product is capable of retaining user-generated data (such as files stored on a computer hard drive, telephone numbers stored on a mobile telephone, songs stored on a portable media player, games saved on a games console or files stored on a USB memory stick) during the process of repair, some or all of your stored data may be lost. We recommend you save this data elsewhere prior to sending the product for repair.

You should also be aware that rather than repairing goods, we may replace them with refurbished goods of the same type or use refurbished parts in the repair process.

Please be assured though, refurbished parts or replacements are only used where they meet ALDI's stringent quality specifications.

If at any time you feel your repair is being handled unsatisfactorily, you may escalate your complaint. Please telephone us on 1300 002 534 or write to us at:

Tempo (Aust) Pty Ltd ABN 70 106 100 252
PO BOX 6097, North Sydney NSW 2059, Australia
Telephone: 1300 002 534 (Aust) Fax: (02) 8977 3765
Tempo Help Desk: 1300 002 534 (Aust)
(Operating Hours: Mon-Fri 8:30am-6pm; Sat 9am-6pm AEST)
Email: tempo.org/support

Online support

Visit bauhn.com.au for the latest Installation Guide for information on the updated features.

Warranty returns

Should you for any reason need to return this product for a warranty claim, make sure to include all accessories with the product.

Product does not work?

If you encounter problems with this product, or if it fails to perform to your expectations, please contact our After Sales Support Centre on 1300 002 534.

ALDI guarantees that our exclusive brand products are developed to our stringent quality specifications. If you are not entirely satisfied with this product, please return it to your nearest ALDI store within 60 days from the date of purchase for a full refund or replacement, or take advantage of our after sales support by calling the supplier's Customer Service Hotline.

