

BAUHN®

Turntable With Speakers



MODEL: ARTTS-0824

User Manual

AFTER SALES SUPPORT

 1300 002 534

 tempo.org/support

MODEL: ARTTS-0824 PRODUCT CODE: 716377 08/2024



Welcome

Congratulations on your purchase!

This manual tells you all you need to know about using your new BAUHN® product.


Please take special note of any important safety and usage information presented with the  symbol.

All products brought to you by BAUHN® are manufactured to the highest standards of performance and safety and, as part of our philosophy of customer service and satisfaction, are backed by our comprehensive 1 Year Warranty.

Domestic use only: This product is intended for indoor domestic use only. It is not suitable for commercial, industrial or outdoor use. Do not use this product for anything other than its intended purpose, and only use it as described in this manual.

We hope you will enjoy using your purchase for many years to come.

Contents

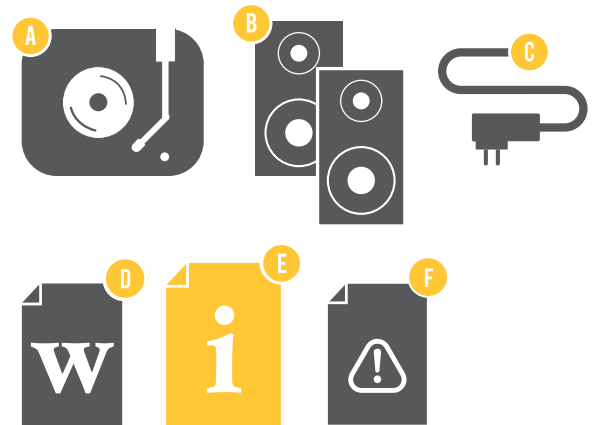
Welcome	2	Bluetooth®	13
Unpack And Prepare	4	Pairing Bluetooth® Devices	13
What's in the Box	4	Troubleshooting	14
 Important Tips	5	Specifications	15
Before First Use	6	Compliance and Responsible Disposal	16
Connect to Power	7	Warranty Information	17
Controls and Connections	8	Repair and Refurbished Goods or	18
Product Overview	8	Parts Notice	
Operation	9		
Power On and Mode selection	9		
Playing a Record	9		
Playing Music from an Auxiliary Input	11		
Tips to Better Performance	11		
Replacing the Stylus	12		

Unpack And Prepare

What's in the Box

Before setting up your new turntable, check you have everything:

- A. Turntable
- B. Speakers (2)
- C. AC Adaptor
- D. Warranty Certificate
- E. User Manual
- F. General Safety Warnings



Important Tips

- Place the turntable on a level surface.
- Place the turntable away from any source that may generate heat or vibrations.
- Make sure there is enough space around the turntable for airflow. Leave at least 10cm clearance around the product.
- Unplug the turntable before cleaning it.
- Clean using a dry cloth only - do not use water or chemicals.
- Only use the provided power supply.
- Keep liquid, children and pets away from the turntable at all times.
- Repack in its original packaging when transporting the turntable.

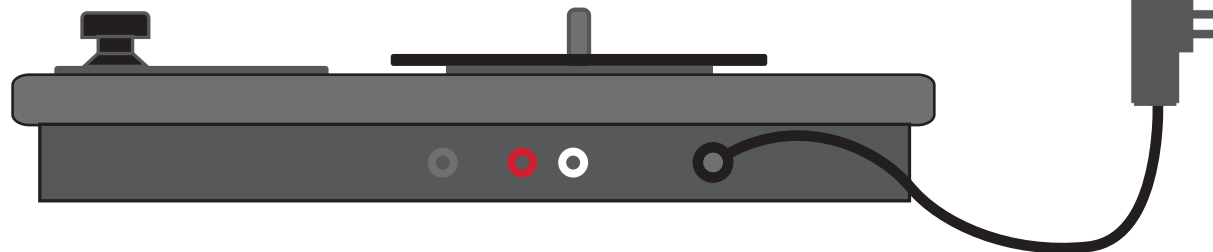
Before First Use

- Unpack the product but keep all packaging materials until you have made sure your new product is undamaged and in good working order. Plastic wrapping can be a suffocation hazard for babies and young children, so ensure all packaging materials are out of their reach.
- Unwind the cord to its full length and inspect it for damage. Do not use the product if the product or its cord have been damaged or are not working properly. In case of damage, contact our after sales support line for advice on examination or repair or return of the damaged product.
- Read this manual to familiarise yourself with all the parts and operating principles of the product.
- Do not connect the product to the mains power socket before checking the mains voltage and before all other connections have been made.

Connect to Power



Make sure the turntable is **switched off** at the power outlet until you have finished connecting your cables.



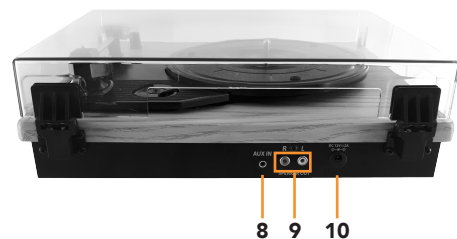
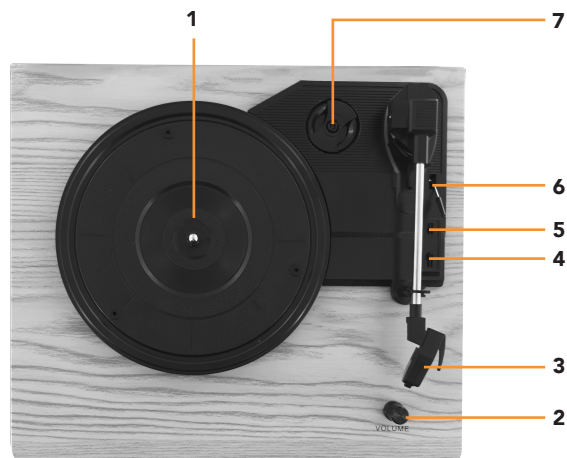
- Connect the DC plug into the DC port of the turntable.
- Plug the adaptor into the AC power outlet.
- Connect to the provided speakers by inserting the red plug into the R socket and the white plug into the L socket.



Don't forget to plug in the turntable to the power outlet. Leave the power switched off until installation is finished.

Controls and Connections

Product Overview



- | | | | |
|---|---------------------------------|----|--------------------------------------|
| 1 | Turntable | 7 | Adaptor (when playing 45rpm records) |
| 2 | Power/Volume knob | 8 | AUX IN |
| 3 | Cartridge | 9 | Speaker jack |
| 4 | Speed adjustment: 33, 45, 78rpm | 10 | DC power jack |
| 5 | Auto stop control | 11 | Transparent cover |
| 6 | Tone arm | 12 | Speakers |

Operation

Power On and Mode selection

- Turn on (with the POWER/VOLUME Knob) and you will hear a doorbell sound, meaning that it is in Bluetooth® mode.
- Once you place the tone arm on the vinyl, the turntable will switch to vinyl mode and Bluetooth® mode will automatically be disabled; Place the tone arm back to the arm rest to switch back to Bluetooth® mode.

Playing a Record

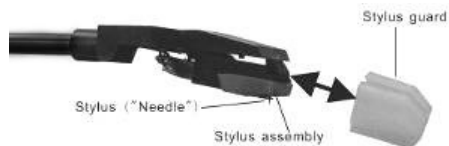
- Turn on (with the POWER/VOLUME KNOB) and adjust the volume to an appropriate level.
- Place a record on the turntable platter and select the correct playing speed: 33, 45, 78 RPM (according to the vinyl being played).
- Set the auto/manual stop control. Set the AUTO STOP switch to ON if you are playing a record and you want the turntable to stop turning when it has reached the end of the record. If the switch is set to OFF, the turntable will continue turning at the end of the record.
- Remove the stylus guard and unlock the tone arm lock. Push the lift lever upward to raise the tone arm and then gently move the tone arm to the desired position over the record. The platter will begin to spin when the tone arm is moved toward the record.



- Push the lift lever forward to lower the tone arm slowly onto the desired position on the record and begin playing the record.
- When you have finished playing the record, push the lift lever backward to raise the tone arm and gently move it back to its rest.
- When you have finished playing records, engage the tone arm lock to protect it from accidental movement. Turn the POWER KNOB to switch the unit OFF. Unplug it from the power supply if you are not going to use it for a while.
- NOTE: If your record stops before the last track finishes, set the AUTO STOP switch to OFF. Your record will now play to the end, but you will have to stop the turntable rotation manually.
- NOTE: Depending on the record length, AUTO STOP may be enabled before the end of the recording. Do not rely on AUTO STOP alone to turn off playback.



To avoid damaging the stylus, ensure that the included stylus guard is in place whenever the turntable is being installed, moved or cleaned.



Playing Music from an Auxiliary Input

- Turn on (with the POWER/VOLUME KNOB) and adjust the volume to an appropriate level.
- Using a 3.5mm Stereo cable, connect the external audio device to the AUX IN socket at the back of the unit.
- Use the POWER/VOLUME KNOB to adjust the volume or use the controls on the external audio device to control the Playback/Volume functions.

Tips for Better Performance

- When opening or closing the turntable cover, handle it gently, moving it either at the center or equally from both sides.
- Do not touch the stylus tip with your fingers; avoid bumping the stylus on the turntable mat or on the edge of the record.
- Clean the stylus tip frequently, using a soft brush with a back-to-front motion only.
- If you use a stylus cleaning fluid, use it very sparingly.
- Wipe the dust cover and turntable housing gently with a soft cloth. Clean the unit only with a dry, clean cloth. Do not use liquid or aerosol cleaners.
- Never apply harsh chemicals or solvents to any part of the turntable system.
- Prior to moving the turntable, always unplug it from the AC power outlet and fasten the tone arm on the tone arm rest with the vinyl twist-tie.



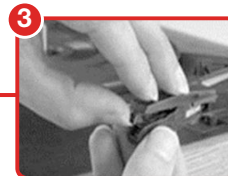
Replacing the Stylus



Push the arm lock to release the tone arm.



Take off the cap of the cartridge to expose the needle.



Separate the cartridge from the cartridge holder by loosening the locker.



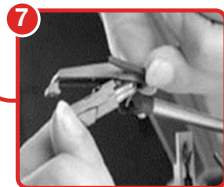
Gently pull the audio-lines from the cartridge, pull from the terminal connector and not the wire itself.



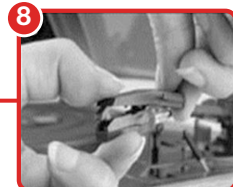
Carefully insert the audio-line connector to the new cartridge.



Make sure the audio-lines are not touching each other.



Carefully slide the cartridge into the cartridge holder.



Gently clip the cartridge into the cartridge holder.

Be very careful when changing the stylus cartridge, to avoid damage to the tone arm and audio wires.



Bluetooth®

You can listen to tracks from a media device if connected to the unit via Bluetooth® wireless technology.

Pairing Bluetooth® Devices

When the turntable is switched on and the tone arm is placed on the arm rest, Bluetooth® mode is automatically activated.

The first time you use your Bluetooth® device with the turntable, you will need to pair them with one another.

Activate Bluetooth on your compatible device, and set it to search for compatible devices.

Select the speaker name: 'ARTTS-0824' from the list of found devices.

If your device asks for a passkey (depending on the device manufacturers, model, and software version), then enter digits "0000" and press OK.

Note: only one device can be connected to the speaker at a time. If the speaker is already connected to another device, the speaker will not appear in the Bluetooth® selection list. To disconnect an existing paired device, go to that device's Bluetooth connection and disconnect the speaker.



The operational range between this turntable and a Bluetooth® device is approximately 10 metres (without any object between the Bluetooth enabled device and the unit). Any obstacle between the devices can reduce the operational range.

Before you connect a Bluetooth® enabled device to this unit, ensure you know the device's capabilities. Compatibility with all Bluetooth devices is not guaranteed.

If the signal strength is weak, your Bluetooth® receiver may disconnect, but it will re-enter pairing mode automatically.



If a mobile phone on which you are playing music receives a call, the music will be interrupted. The phone call audio however is not played via the speakers. Once you end the call, the devices are connected to each other again and playback resumes.

Your device will also be disconnected when your device is moved beyond the operational range. If you want to reconnect your device, place it within the operational range.

If the connection is lost, follow the instructions (left) to pair your device to the player again.



Troubleshooting

If you have problems with the turntable, check below for advice. If you don't find a solution here, contact After Sales Support on 1300 002 534.

Problem	Solution
No power	<ul style="list-style-type: none">• Ensure that the AC adaptor is properly connected.• Ensure that there is power at the AC outlet.
No sound	<ul style="list-style-type: none">• Rotate the volume knob clockwise to increase the volume.• Check that the speakers are connected correctly.• Check that there is no cable plugged into the AUX IN port.
The vinyl record will not play	<ul style="list-style-type: none">• Make sure you have selected the correct speed (33, 45, 78rpm).
Nothing will play via AUX IN connection	<ul style="list-style-type: none">• Make sure the cable is firmly connected and check that your external device is clean and not damaged. Make sure the volume of the external device is turned up.



Specifications

Adaptor input: Adaptor output:	100-240V~50/60Hz 0.8A Max 12.0V=2.0A 24.0W Use only with < GKYZD0200120AU > supply unit	
Rated power:	24W Max.	
Dimensions (Turntable)	348(W) x 323(D) x 101(H)mm 36cm turntable clearance height	
Dimensions (Speaker)	131(W) x 122(D) x 202(H)mm	
Vinyl Records	Speed	Supports playback speed 33 / 45 / 78
	Record size support	7" = 17.7cm 10" = 25.5cm SP 12" = 30cm LP
Speaker	2 x 10W	
Unit Mass	4.5kg	

For Technical and Warranty Support

1300 002 534

tempo.org/support

Distributed by Tempo (Aust) Pty Ltd,

PO BOX 6097, North Sydney, NSW, 2059



Compliance and Responsible Disposal



Packaging

The packaging of your product has been selected from environmentally friendly materials and can usually be recycled. Please ensure these are disposed of correctly. Plastic wrapping can be a suffocation hazard for babies and young children, please ensure all packaging materials are out of reach and are safely disposed of. Please recycle these materials rather than throwing them away.

Product

At the end of its working life, do not throw this product out with your household rubbish. An environmentally friendly method of disposal will ensure that valuable raw materials can be recycled. Electrical and electronic items contain materials and substances which, if handled or disposed of incorrectly, could potentially be hazardous to the environment and human health.

Compliance

This product complies with the Australian Safety Standard AS/NZS 62368.1 to ensure the safety of the product.

Bluetooth®

The Bluetooth® word mark and logos are registered trademarks owned by Bluetooth SIG, Inc., and any use of such marks by Hands (IP) Holdings Pty Ltd is under license. Other trademarks and trade names are those of their respective owners.



BAUHN®

Warranty Information

The product is guaranteed to be free from defects in workmanship and parts for a period of 12 months from the date of purchase. Defects that occur within this warranty period, under normal use and care, will be repaired, replaced or refunded at our discretion, solely at our option with no charge for parts and labour. The benefits conferred by this warranty are in addition to all rights and remedies in respect of the product that the consumer has under the Competition and Consumer Act 2010 and similar state and territory laws.

Our goods come with guarantees that cannot be excluded under the Australian Consumer Law. You are entitled to a replacement or refund for a major failure and to compensation for any other reasonably foreseeable loss or damage. You are also entitled to have the goods repaired or replaced if the goods fail to be of acceptable quality and the failure does not amount to a major failure.





BAUHN®

Repair and Refurbished Goods or Parts Notice

Unfortunately, sometimes faulty products are manufactured, which need to be returned to the supplier for repair.

Please be aware that if your product is capable of retaining user-generated data (such as files stored on a computer hard drive, telephone numbers stored on a mobile telephone, songs stored on a portable media player, games saved on a games console or files stored on a USB memory stick) during the process of repair, some or all of your stored data may be lost. We recommend you save this data elsewhere prior to sending the product for repair.

You should also be aware that rather than repairing goods, we may replace them with refurbished goods of the same type or use refurbished parts in the repair process.

Please be assured though, refurbished parts or replacements are only used where they meet ALDI's stringent quality specifications.

If at any time you feel your repair is being handled unsatisfactorily, you may escalate your complaint. Please telephone us on 1300 002 534 or write to us at:

Tempo (Aust) Pty Ltd ABN 70 106 100 252
PO BOX 6097, North Sydney, NSW, 2059, Australia
Telephone: 1300 002 534 (Aust) Fax: (02) 8977 3765
Tempo Help Desk: 1300 002 534 (Aust)
(Operating Hours: Mon-Fri 8:30am-6pm; Sat 9am-6pm AEST)
Email: tempo.org/support

Notes

Online support

Visit bauhn.com.au for software updates to keep your product up-to-date, as well as the latest User Manual for information on the updated features.

Warranty returns

Should you for any reason need to return this product for a warranty claim, make sure to include all accessories with the product.

Product does not work?

If you encounter problems with this product, or if it fails to perform to your expectations, please contact our After Sales Support Centre on 1300 002 534.

ALDI guarantees that our products are developed to our stringent quality specifications. If you are not entirely satisfied with this product, please return it to your nearest ALDI store within 60 days from the date of purchase for a full refund or replacement, or take advantage of our after sales support by calling the supplier's Customer Service Hotline.



AFTER SALES SUPPORT



1300 002 534



tempo.org/support

MODEL: ARTTS-0824 PRODUCT CODE: 716377 08/2024