

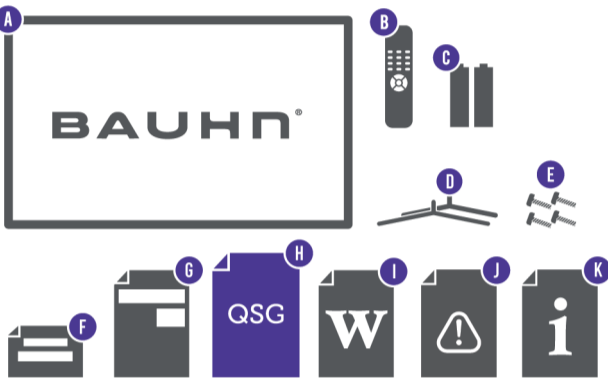
Quick Start Guide

Model: ATV32HDW-0424



Hey!
Let's get your new TV
ready to use, fast!

1 Have you got everything?



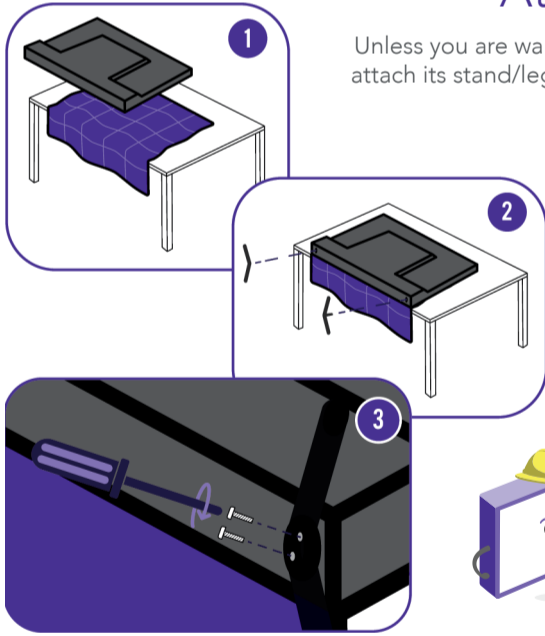
See the flap of the box for how to handle the TV without damaging it!

- You will also need:
- Phillips-head screwdriver
 - Someone to help lift the TV

Unpack the box (be gentle) and make sure all of these items are there:

- | | | |
|-----------------------------------|-------------------------------|----------------------------|
| A. 32" HD Smart TV | E. Screws for TV Stands (4) | I. Warranty Certificate |
| B. Remote | F. Warning Sheet | J. General Safety Warnings |
| C. AAA Activ Energy Batteries (2) | G. TV Toppling Safety Message | K. User Manual |
| D. TV Stands (2) | H. Quick Start Guide | |

2 Attach the TV stand



Unless you are wall-mounting the TV, you will need to attach its stand/legs. If you do want to wall mount the TV, see page 7 of the User Manual.

Lay the TV face-down on a soft, flat surface (like the sofa, or a towel on a table).

Match stands to the installation points on the underside of the TV.

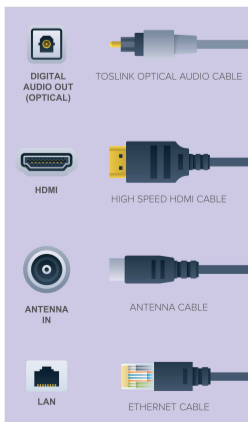
Attach the stand to the TV at the installation points using the screws provided. (Grab a screwdriver for this bit).

This TV is heavy!
We recommend asking someone to help you lift it.

3 Which plug goes where?

Want to hook up your new TV to a DVD player or something else? Use the basic guide below to see what the plug and port should look like for different connections.

You can find more of these on page 10-11 of the User Manual. (These cables do not come with your TV)



Use this to connect your soundbar, amplifier, digital receiver, or other external audio equipment.

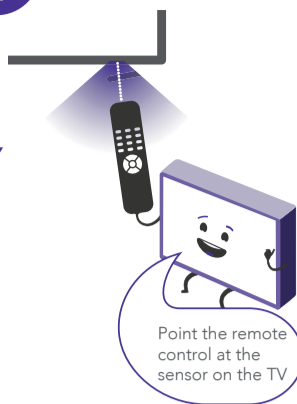
Use this connection for a DVD player, gaming console, computer and camera.

To watch free-to-air TV channels, you need an antenna connection.

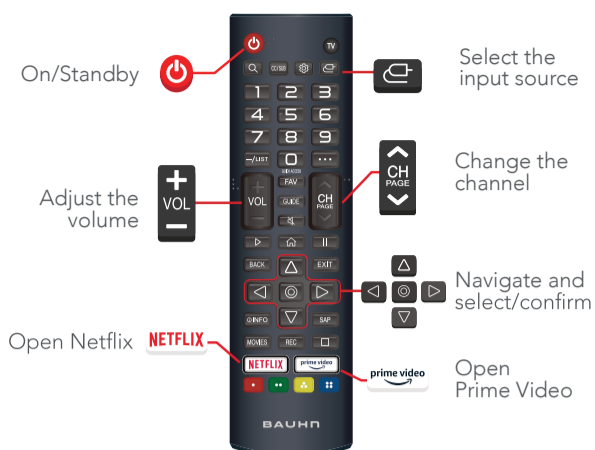
Use this cable to connect the TV to your modem for internet access. This TV also has Wi-Fi connectivity.



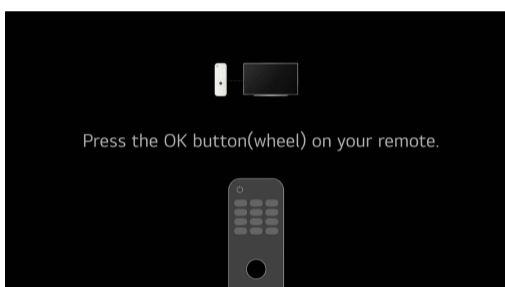
4 Get to know the remote



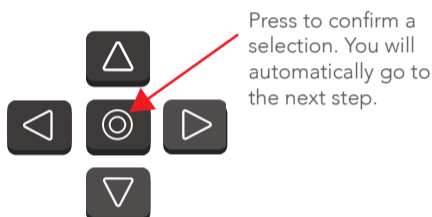
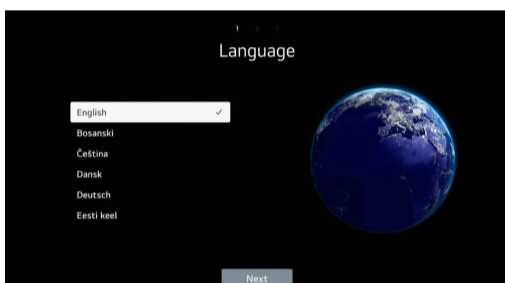
Familiarise yourself with the magic remote - you'll be spending a lot of time together.
Here are some of the buttons you'll be using most often.



On-screen set-up & Remote Pairing



Follow the on-screen set-up prompts to set your language, country, time zone and connect to the internet.
Note: during the remote pairing interface, please press any button on the remote to skip the process as this model does not include the Magic Remote.

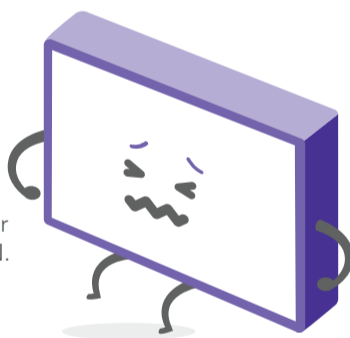


? Uh-oh, this isn't right...

Set-up not going smoothly? We've got you!
We just need you to check a few things first:

🔌 Is it plugged in?

A new TV is exciting! So it's easy to forget something simple - like plugging it into the power outlet. Psst... make sure the outlet is switched ON.



i Look at the manual!

More often than not, the answer you need is right there in the User Manual. The troubleshooting section on pages 39-41 may come in handy for tricky stuff.

📞 Ok, time to give us a call

What? You mean the User Manual didn't have ALL the answers? Speak to us! We'd love to help you get up and running as quickly as possible. Call our **After Sales Support** on **1300 002 534**.

Operating hours: Monday-Friday, 8:30am-6pm; Saturday, 9am-6pm AEST

Your new TV is ready to enjoy!

Well done, you made it.
Now sit back and relax... your new TV is automatically covered by a 1-year warranty. How nice!

