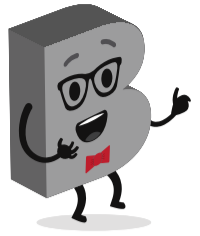
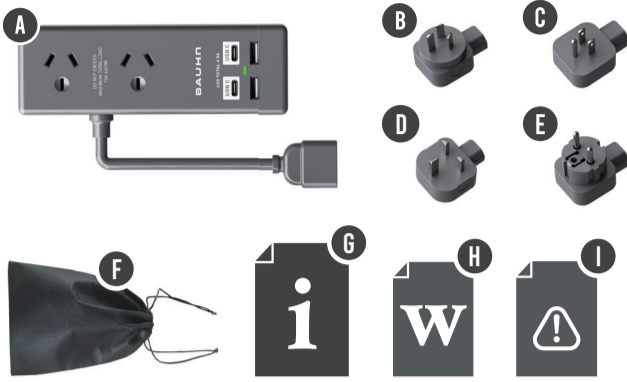


### 1 Have you got everything?



Note: images for reference only. Powerboard and adaptors may be a different colour.

Unpack the box and make sure all of these items are there:

A. Dual Powerboard with USB and USB-C Ports

D. UK/Hong Kong Adaptor

H. Warranty Certificate

B. Australia Adaptor

E. Asia/Europe Adaptor

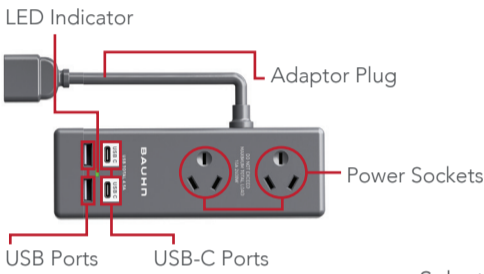
I. General Safety Warnings

C. America/Asia Adaptor

F. Drawstring Bag

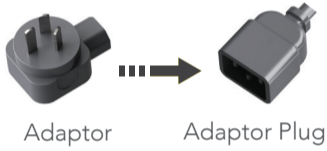
G. User Guide

### 2 Product Overview



This Universal Travel Adaptor Kit allows you to interchange adaptor plugs for different countries, so you can use your Australian appliances wherever you travel.

Select the correct adaptor for the country or continent you are visiting. Connect adaptor to the built-in adaptor plug of the powerboard (as shown by the black arrow in the picture). Then, plug it into the wall outlet.



Plug in your Australian appliance or device to the plug socket or USB port on the powerboard. You can power multiple items simultaneously if you need.

You can now use your Australian appliances or devices.

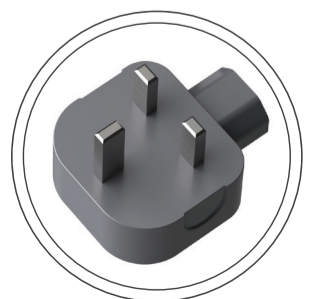
### 3 Australia Adaptor

Suitable for: Australia, New Zealand, Fiji, Tonga, Solomon Islands, Cook Islands, China, Argentina, Uruguay, Uzbekistan and Papua New Guinea.



### 4 America/Asia Adaptor

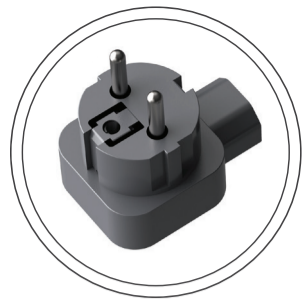
Suitable for: American Samoa, Aruba, Bahamas, Barbados, Bermuda, British Virgin Islands, Belize, Canada, Cayman Islands, Colombia, Costa Rica, Cuba, Dominican Republic, Ecuador, El Salvador, Guam, Guatemala, Guyana, Haiti, Honduras, Jamaica, Japan, Laos, Lebanon, Liberia, Mexico, Micronesia, Montserrat, Netherlands Antilles, Nicaragua, Niger, Okinawa, Palau, Panama, Philippines, Puerto Rico, Taiwan, Thailand, Turkmenistan, United States, Venezuela.



### 5 UK/Hong Kong Adaptor

Suitable for: Bahrain, Bangladesh, Belize, Bhutan, Botswana, Brunei, Cambodia, Cyprus, Dominica, Falkland Islands, Gambia, Ghana, Gibraltar, Grenada, Guyana, Hong Kong, Iraq, Ireland, Isle of Man, Jordan, Kenya, Kuwait, Lebanon, Macau, Malawi, Malaysia, Maldives, Malta, Mauritius, Nigeria, Oman, Pakistan, Qatar, St.Kitt-Nevis, St.Lucia, St.Vincent, Saudi Arabia, Seychelles, Sierra Leone, Singapore, Solomon Islands, Tanzania, Uganda, United Arab Emirates, United Kingdom, Vanuatu, Yemen, Zambia, Zimbabwe.

Suitable for: Albania, Algeria, Armenia, Angola, Andorra, Austria, Azerbaijan, Balearic Islands, Bangladesh, Belgium, Bolivia, Bosnia, Brazil, Bulgaria, Burkina Faso, Burundi, Cameroon, Cape Verde, Central African Republic, Chad, Chile, China, Comoros, Congo, Croatia, Rep. Of Congo (Zaire), Cote d'Ivoire (Ivory Coast), Denmark, Djibouti, Egypt, Equatorial Guinea, Eritrea, Estonia, Faroe Islands, Finland, France, French Guiana, Gabon, Georgia, Germany, Gibraltar, Greece, Greenland, Guadeloupe, Guinea-Bissau, Hungary, Iceland, Indonesia, Iran, Iraq, Isle of Man, Israel, Italy, Jordan, Kazakhstan, Korea, Kuwait, Laos, Lebanon, Liberia, Libya, Lithuania, Luxembourg, Macedonia, Madagascar, Madeira, Mali, Martinique, Mauritania, Mauritius, Monaco, Morocco, Mozambique, Nepal, Netherlands, Niger, Norway, Oman, Pakistan, Paraguay, Peru, Philippines, Poland, Portugal, Romania, Russia, Rwanda, St. Vincent, Senegal, Serbia, Slovakia, Slovenia, Somalia, Spain, Sudan, Suriname, Sweden, Switzerland, Syria, Thailand, Togo, Tunisia, Turkey, Uruguay, Vietnam, Zambia.



## Specifications

Power supply input	AC 110-240V, 50-60Hz, 2400W max.
USB/USB-C output	DC 5V, total 4.5A max.
Total outlet loading	2400W, 10A max.
Cord length	1 metre

**IMPORTANT:** This product must only be used with low wattage devices not exceeding 2400W. For using the device at 110V country not exceeding 1100W.

**Some countries use more than one type of plug. Check each area before you travel.**

This adaptor kit does not convert voltage or mains frequency (50Hz, 60Hz). Check the supply voltage/frequency and the voltage/frequency required by your appliance. **If they differ, an appropriate transformer must be used.**

## Troubleshooting

No power output from any of the sockets.

- See if the LED indicator light on the powerboard is on. If it's off, make sure the plug adaptor is firmly connected to the socket in one end of the powerboard wire.
- Make sure the plug is firmly connected to the wall socket.
- Check if the wall socket has power output.
- Try other adaptor plugs to see if they work.

No power output from just one of the sockets.

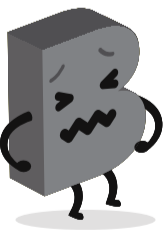
- Try other sockets; if other sockets have power output, the issue could be that the contact of the faulty socket is loose or not connected.

USB/USB-C charging is very slow.

- The total power output of USB/USB-C ports is limited to 4.5A and some devices require a high amount of charging power. If you connect multiple devices to the USB/USB-C ports, it may slow down the charging speed. Try disconnecting some devices and only charge one or two devices at the same time.
- Make sure the USB/USB-C cable is firmly plugged into the USB/USB-C port.
- Some USB/USB-C cables have limited charging power; try a different USB/USB-C cable to see if it improves.

USB/USB-C charging is not working at all.

- Check if the powerboard is correctly connected to the mains input, and the LED indicator light is on.
- Make sure the USB/USB-C cable is firmly plugged into the USB/USB-C port.
- Try other USB/USB-C ports.
- Try using a different USB/USB-C cable.



## Give Us A Call



What? You mean this User Guide didn't have ALL the answers? Speak to us! We'd love to help you get up and running as quickly as possible. Call our **After Sales Support** on **1300 002 534**  
Operating hours: Monday-Friday, 8:30am-6pm; Saturday, 9am-6pm AEST

Peace of mind built-in; your new Bauhn product is covered by a 1-year warranty.

This product complies with Australian Safety standard AS/NZS 3105 to ensure the safety of the product.

### Responsible disposal of the packaging

The packaging of your product has been selected from environmentally friendly materials and can usually be recycled. Please ensure these are disposed of correctly. Plastic wrapping can be a suffocation hazard for babies and young children, please ensure all packaging materials are out of reach and are safely disposed of. Please ensure they are offered for recycling rather than throwing these materials away.

### Responsible disposal of the product

At the end of its working life, do not throw this product out with your household rubbish. An environmentally friendly method of disposal will ensure that valuable raw materials can be recycled. Contact your local authority for your nearest recycling centre. Electrical and electronic items contain materials and substances which, if handled or disposed of incorrectly, could be hazardous to the environment and human health.

