

BAUHN®
EFFORTLESS TECHNOLOGY



65"

4K
Ultra HD Android TV™

ATV65UHDG-1019

User Manual



Welcome

Congratulations on your purchase!


This manual tells you all you need to know about using your new Bauhn® product.

Please take special note of any important safety and usage information presented with the  symbol.

All products brought to you by BAUHN® are manufactured to the highest standards of performance and safety and, as part of our philosophy of customer service and satisfaction, are backed by our comprehensive 1 Year Warranty.

We hope you will enjoy using your purchase for many years to come.

Contents

Welcome	2	Smart TV	17	Screen Saver	38
Unpack and Prepare	4	Download or Delete Apps	18	About	39
What's in the box	4	Using Voice Interaction	19	Remote and accessories	40
 Important Tips	5	Connected Google Home	19	High Dynamic Range (HDR)	41
Attaching the stand	6	Sources and Inputs	20	TV Guide	42
Wall-mounting the TV	7	TV Setting Menus	21	Recording	43
Connect to power	8	Channels	23	Recording Live TV	44
Connect your antenna	8	Picture	24	Scheduled recording	44
Controls and Connections	9	Sound	26	Pause Live TV (Time-shift)	45
Get to know your TV	9	Network	28	Troubleshooting	46
Buttons on the TV	9	Accounts and Sign-in	30	Specifications	48
Ports on the TV	10	Google Assistant	31	Compliance and Responsible Disposal	49
Remote Control	12	Apps	32	Warranty Information	50
Setup	12	Inputs	33	Repair and Refurbished	
Using the Remote Control	13	Storage	34	Goods or Parts Notice	51
Remote Pairing	13	Power	34		
Remote Overview	14	Date and Time	35		
On-Screen Set Up	16	Location	36		
		Accessibility	37		

Unpack and Prepare

What's in the box

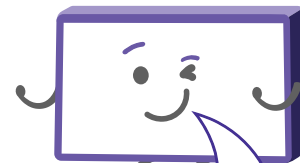
Before installing your new TV, check you have everything needed.

In the box you will find:

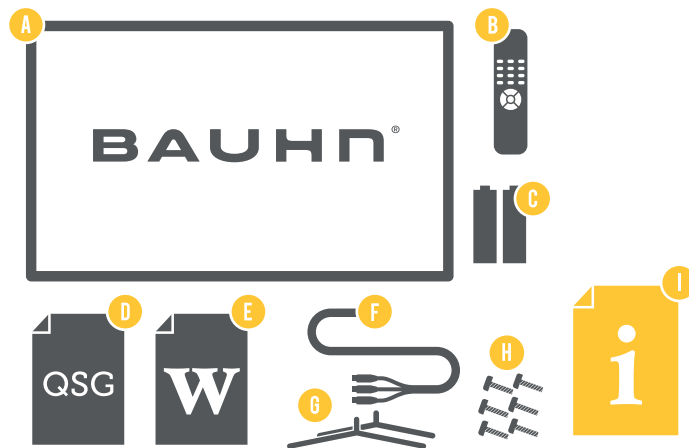
- A. Ultra HD Android TV
- B. Remote Control
- C. AAA Batteries
- D. Quick Start Guide
- E. Warranty Certificate
- F. Mini AV Cable
- G. Stands
- H. Screws (for the stands)
- I. User Manual

You will need:

- Phillips-head screwdriver (for stand installation)
- Someone to help you lift and install your TV
- Google account



See the inside flap of the box for how to handle the TV without damaging it!

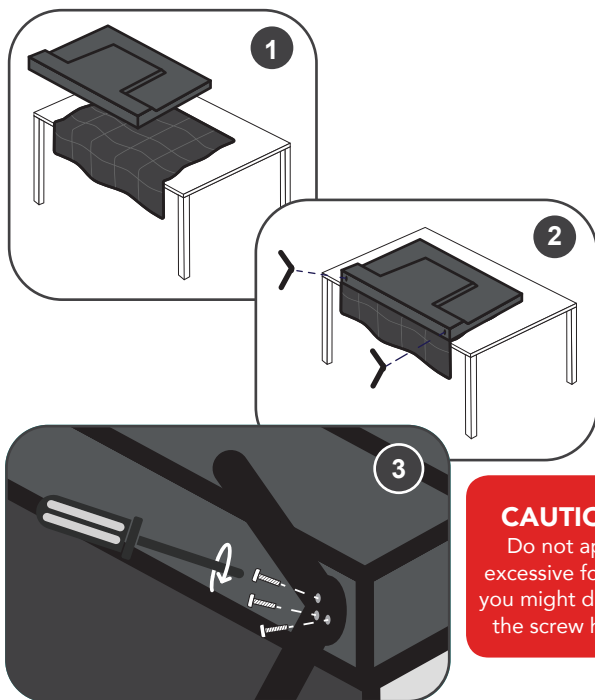


- Internet connection (to access Smart TV apps and functionality)
- Antenna cable (to watch live TV)

Important Tips

- Place the TV on a level surface.
- Place the TV away from any source that may generate heat or vibrations.
- Make sure there is enough space around vents for airflow.
- The remote control works up to 5 metres away from the TV.
- Unplug the TV before cleaning it.
- Clean using a dry cloth only - do not use water or chemicals.
- Use only the power supply provided.
- It is highly recommended to use safety straps for securing the TV in place.
- Keep liquid, children and pets away from the TV at all times.

Attaching the stand



- This TV is heavy! We recommend asking someone to help you lift it.
- Unplug the TV from the power outlet before installing or removing the stand.
- DO NOT place the TV standing upright without its stand attached; it could damage the remote sensor at the bottom of the TV.
- Only touch the frame, not the screen.
- It is highly recommended to use safety straps for securing the TV.

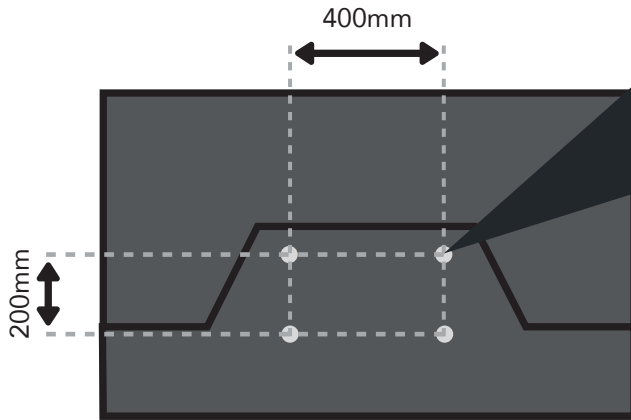
Unless you are wall-mounting the TV, you will need to attach its stand/legs.

1. Lay the TV face-down on a soft, flat surface (like the sofa, or a towel on a table).
2. See the 'L' and 'R' markings on the stand? Match them to the installation points on the underside of the TV.
3. Attach the stand to the TV at the installation points using the screws provided. (Grab a screwdriver for this bit).

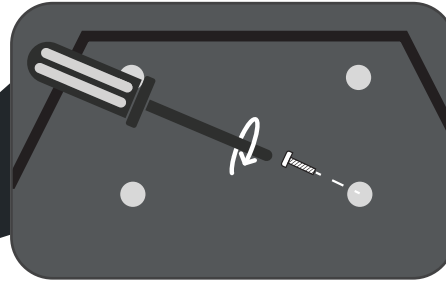
Wall-mounting the TV



- Unplug the TV from the power outlet before wall-mounting.
- Contact a professional for assistance with wall-mounting the TV.



Back of the TV



Required

- VESA Mounting Bracket
- 4 x M6*15mm screws (or longer as required)

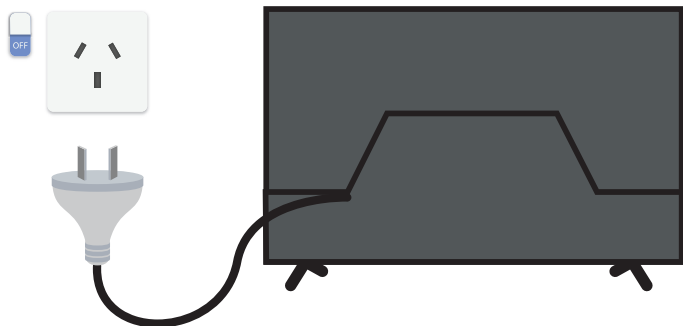
The TV comes with holes on the back panel for use with wall-mounting brackets (bracket not included).

Use four standard M6*15mm screws (or longer, depending on the mounting bracket) to wall-mount this TV (screws are not included).



The screws in the package are for securing the TV stand only. If you are wall-mounting the TV, consult a qualified installer for advice on bracket support and wall support.

Connect to power



Connect your antenna

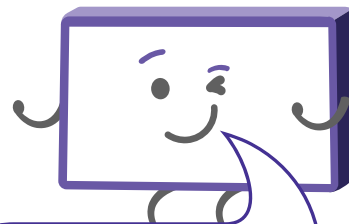
Free-to-air TV in HD (High Definition)

Example
HD Channels

ABC HD
SBS ONE HD
7HD
9HD
10 HD
PRIME7 HD
WIN HD

High Definition (HD) channels provide the best viewing quality and are available with a digital antenna connection.

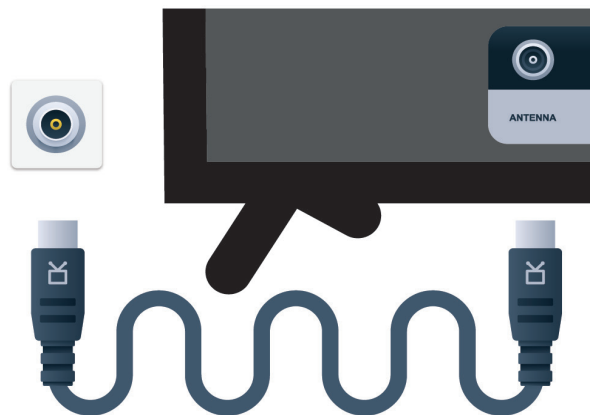
TV channels in Ultra HD resolution are not currently available in Australia. Therefore when you watch HD broadcast signals on an Ultra HD TV, the picture can appear 'soft' and lacks the detail you see when watching the same content on an HD TV.



Don't forget to plug in the TV to the power outlet. Leave the power switched off until installation is finished.



Make sure the TV is **switched off** at the power outlet until you have finished connecting your cables.



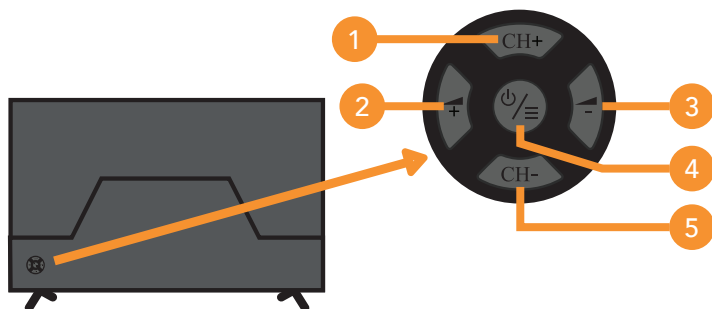
Antenna cable not included.

Controls and Connections

Get to know your TV



Buttons on the TV

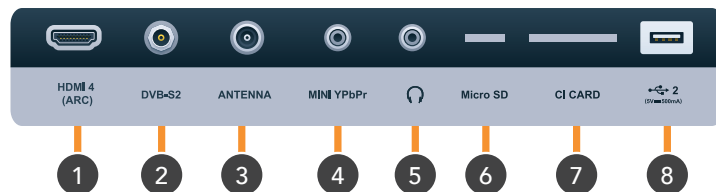
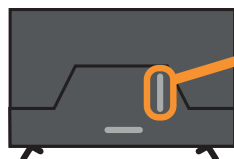


1. CH+ : Select the next channel or move up.
2. ▲ + : Increase the volume level or move left.
3. ▼ - : Decrease the volume level or move right.
4. ⏻/≡ (ON/SMART HOME): When the TV is on standby, press to turn on the TV. When the TV is on, press once to access the smart home screen then use CH+, CH-, ▲ + and ▼ - buttons to navigate and ON/SMART HOME button to confirm. When the TV is on, press and hold for 5 seconds to turn off the TV.
5. CH - : Select the previous channel or move down.

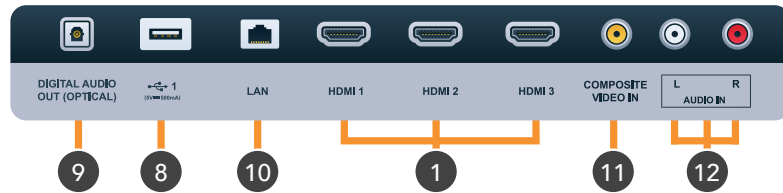
See next page for more info on the connections.



Ports on the TV

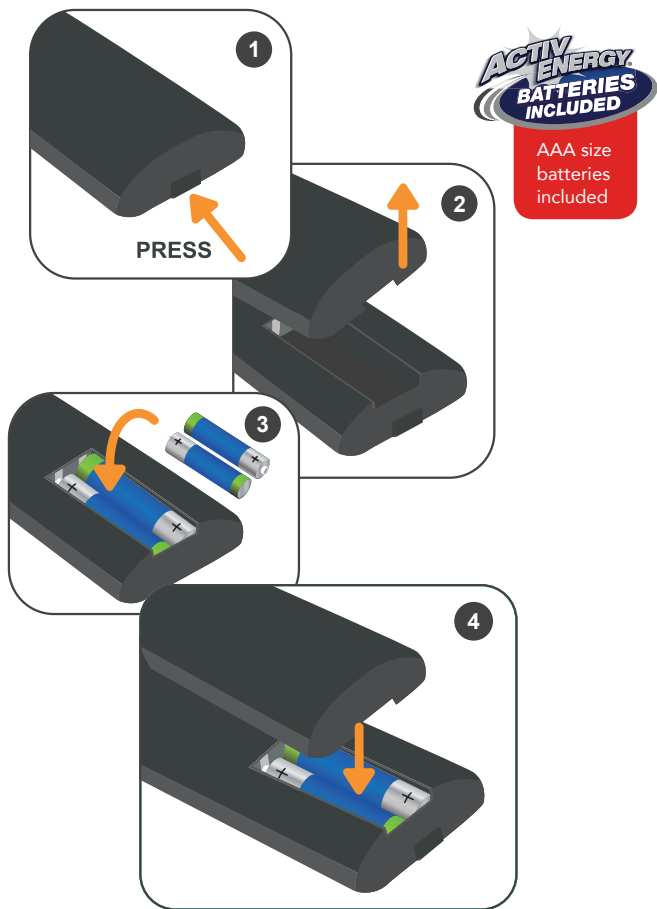


1	HDMI Use a high-speed HDMI cable for best picture and sound quality.			SOUND PICTURE COMPUTER	All-digital connection between the TV and any HDMI device. Supports Ultra HD. Requires a high-speed HDMI cable (not included).
2	DVB-S2			SATELLITE TV	Not supported in Australia.
3	Antenna			FREE-TO-AIR TV	Connect your antenna for live TV. (Antenna cable not included.)
4	Mini YPbPr			PICTURE	You can use this to connect your DVD player. Supports High Definition (HD) picture quality. (Mini Video adapter included.) For audio, use the AUDIO IN sockets.
5	Headphone Jack			SOUND	Connect to your headphones, amplifier, soundbar or audio device, using an AUX cable (not included).
6	Micro SD			STORAGE	Insert a Micro SD card to play media files stored on your storage device (supported file codecs and extensions may vary).



7	CI Port		PAY TV	Not supported in Australia.
8	USB		STORAGE	Plug in a USB stick to PVR record and pause live TV. Play media files stored on your USB storage device (supported file codecs and extensions may vary). Update the TV software via USB.
9	Digital Audio Out (Optical)		SOUND	Connect an external digital audio device. Use an Optical cable (not included) to connect the unit with an amplifier, soundbar or other audio decoding device for digital audio signal output.
10	LAN		INTERNET	Connect to your broadband modem using a network cable (not included).
11	Video IN		PICTURE	You can use this to connect your DVD player. Supports Standard Definition (SD) picture quality. Requires an AV cable (not included).
12	AUDIO IN		SOUND	You can use this to connect Audio to your TV for Composite or YPbPr video inputs. Requires an RCA Stereo Audio cable (not included).

Remote Control



Setup

Insert two AAA size batteries according to the polarity markings (+ / -) inside the compartment. Make sure the batteries are correctly aligned and properly pushed into place.



Precautions When Using Batteries

- Do not use old and new batteries together.
- Do not use different types of batteries (e.g. Manganese and Alkaline batteries) together.
- Remove the batteries from the remote if you do not intend to use it for a long time.
- When discarding used batteries, follow any guidelines for recycling and disposal of batteries that apply in your local area.
- Keep batteries away from children and pets.
- Never throw batteries into a fire or expose them to extreme heat.

Using the Remote Control

To use the remote, point it towards the remote sensor at the front of the TV. The remote will not operate if its path is blocked.

The remote has a range of up to about 5 metres from the TV at an angle of up to 30 degrees to either side of the sensor, as illustrated below.

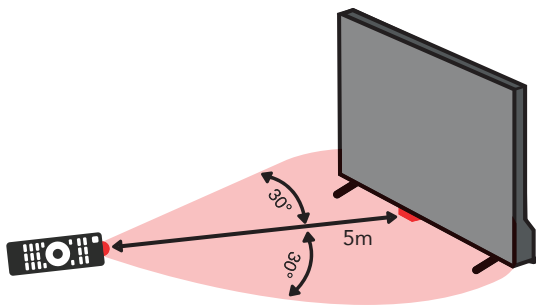


Image is an example only.
Remote sensor location on your TV may vary.

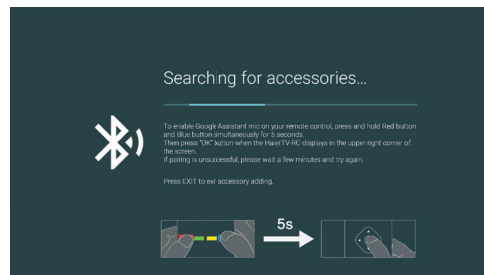


Remote Hints and Tips

- Do not drop, step on or otherwise impact the remote control. This may damage the parts or lead to malfunction.
- Do not place objects between the remote control and the remote sensor.
- Do not use this remote control while simultaneously operating a remote control for other devices.

Remote Pairing

If your remote is not paired to your TV, refer to page 40 for pairing information and instructions.



Remote Overview

ON: Switch the TV to On or Standby.

Google Assistant: Summon the Google Assistant.

⏮: Rewind.

▶: Play.

REC (RECORD): Record a TV program.

TEXT: Teletext (not available in Australia).

FAV: Open the favourite channel list.

NETFLIX: Launch the Netflix app.

🏠: Display the home screen.

▲ / ▼ / ◀ / ▶: Press the **UP/DOWN/LEFT/RIGHT** buttons to navigate.

BACK: Return to the previous screen or channel.



Microphone

🔇 (MUTE): Mute or restore sound.

⏭: Fast forward.

■: Stop.

⏸: Pause.

SOURCE: Access the Android TV home screen.

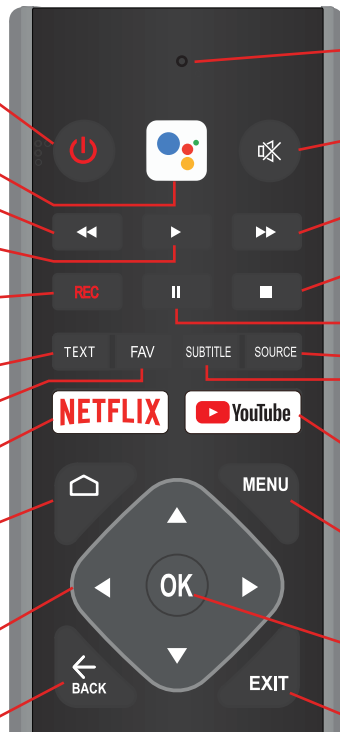
SUBTITLE: Display or hide subtitles.

YouTube: Launch the YouTube app.

MENU: Open and close the on-screen menu.

OK: Confirm your selection.

EXIT: Function depends on the active app or source.





+ VOL - : Turn the volume up or down.

INFO: Display program information.

NUMBER BUTTONS (0-9): Press to select a TV channel directly when watching TV.

CH. LIST: Display the channel list.

RED / GREEN / YELLOW / BLUE **RED / GREEN / YELLOW / BLUE** **BUTTONS**: Functions are according to the on-screen display.

^ CH v : Go to the next or previous channel.

GUIDE: Launch the TV Guide.

AUDIO: Change the audio language (if available).

On-Screen Set Up



Make sure equipment is properly connected (as shown on page 10-11) before connecting the TV to power.



On/Standby light is
WHITE in standby mode.

On/Standby light is off
when the TV is on.

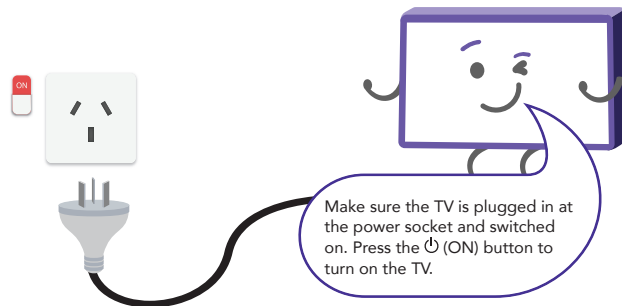
First Time Setup menu

When you turn the TV on for the first time, the First Time Setup menu will appear.

Follow the prompts using the ▲ / ▼ / ◀ / ▶ / OK buttons to select your preferences. You will be guided through:

- 1. Remote Pairing 2. Language 3. Quick Setup 4. Wi-Fi Setup 5. Sign into Google Account
- 6. Terms of service 7. Location 8. Help improve Android 9. Google Assistant
- 10. Google Assistant Services and privacy 11. Personal results 12. Country 13. Password
- 14. Timezone 15. TV Mode 16. Tuner Mode 17. Channel Scan

If you make an error, you can update your preferences in the settings menu later.



1. Remote Pairing

1. Press and hold RED and BLUE buttons at the same time for 5 seconds and let go.
2. When "TempoATV-RC" on top-right corner of the screen, press the OK button to initiate pairing. once paired, screen will automatically go to the next step.
3. If pairing was unsuccessful, wait 30 seconds and try again.



3. Quick Setup

NOTE: To use your Android TV, you will need a Google Account.

There are 3 options to set up your TV:

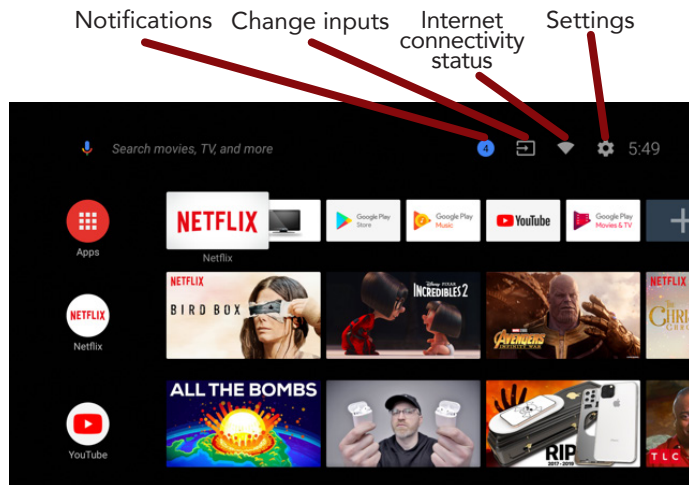
1. Quick Start using an Android phone: Your Android TV will automatically connect to the wi-fi network and Google account that the Android phone is connected to).
2. Set up with your remote: Use the remote to manually enter Google account and connect to wi-fi)
3. Set up with a phone or computer: Make sure your phone or computer is on the same wi-fi network as the TV is connecting to.

Smart TV

Before you start using apps, your TV must be connected to the internet.

The speed of your internet connection determines the quality of your audio/video experience when you watch streaming content.

Accessing internet content may count towards your download limit and may incur fees from third parties such as your internet service provider (ISP).



Function

Remote Button

Display the Home/App screen



Select different Apps



Open your desired App



NETFLIX

Netflix is a streaming service that offers unlimited viewing of a wide variety of award-winning TV shows, movies and documentaries.

A paid subscription is required.

This TV can play Netflix content in 4K Ultra HD HDR resolution, however the playback resolution may be lower depending on your subscription level and your network speed.

Streaming Netflix content will count towards the data usage of your broadband plan.

Download or Delete Apps

You can download apps and games for your Android TV through the Play Store app.

Download apps

1. From the Android TV Home screen, Select the Google Play Store app.
2. Browse or search for apps and games.

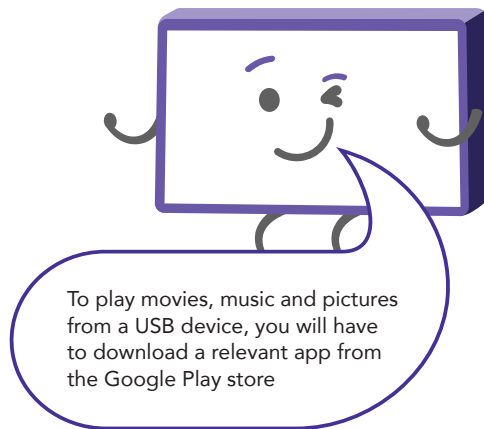
To browse: Move up or down to view different categories. When you find a category you're interested in, move to the right to view items.

To search: To speak your search, scroll to the top of the screen and select the Microphone. To type your search, scroll to the right at the top of the screen and select Input .

3. Select the app or game you want.
4. Select Install.

Delete an app


1. From the Android TV Home screen, scroll down and select Settings.
2. Select Apps.
3. Under "Recently Opened Apps" or "See All Apps," choose the app you want to remove.
4. Select Uninstall and then OK.



To play movies, music and pictures from a USB device, you will have to download a relevant app from the Google Play store

Using Voice Interaction

Your TV remote has a built-in microphone. To enable Google Assistant, you must pair the remote control with the TV which should have been completed during the initial TV setup. If the remote is not paired, see page 40 for pairing instructions.

- To get help from the Google Assistant, ensure that:
 - Your TV is connected to the internet
 - You have signed into your Google account.
- Press the  button on your remote to get started.
- At the bottom of your TV screen, an introduction will appear. when 4 dots appear, speak into the microphone in your remote.
- You can ask your Google Assistant for info and play videos from YouTube, etc.
- For ideas about what your Assistant can help with, ask "What can you do?"
- Download the Google Assistant app on you iPhone, iPad or Android smart device to customise your Google Assistant experience.

Connected Google Home


Use your voice to control all Google Assistant-enabled smart devices in your home such as cast videos to your Android TV, stream music to a wireless speaker, turn on/off smart power switches and much more.

To get started, get Google Home app from your favourite app store. Sign in to your google account, the same one that you used to sign in to the TV.

Proceed to add your devices. Your Android TV "TempoATV" should already be there. make sure to set it up as your default display device.

Sources and Inputs

How to access other devices connected to the TV






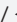



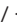



1. On the smart home screen, select  Inputs and press **OK**. Then select your desired input source and press **OK**.
2. You may also select the Live TV tile and press **OK** to directly go to live TV.
3. While you're on an input source, press Menu and select Source and press **OK**. Then select your desired input source and press **OK**.

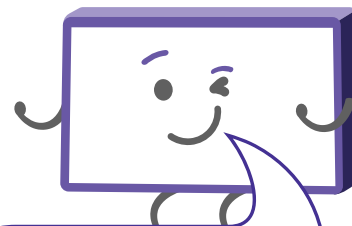


TV Setting Menus

Menu Navigation Buttons

Press the **MENU** button to display the TV settings menu. See the guide below for all the other buttons you'll need to use to adjust and change your settings.

Function	Remote Button
Display the main menu	
Enter a sub menu	 OR 
Select an option	 /  /  / 
Adjust a value	 /  /  / 
Return to the previous menu	
Exit a menu	



Once you have programmed any settings, the unit will retain them in its memory until you change them, even after turning the TV off.

Menus Index

Channel	23
<ul style="list-style-type: none">• Channels• Channel Installation Mode• Auto Channel Update• Parental Controls• Channel Sub-Menus:<ul style="list-style-type: none">• Channel scan, Single RF Scan	
Picture	24
<ul style="list-style-type: none">• Picture Mode• User Mode Settings:<ul style="list-style-type: none">• Backlight, Brightness, Contrast, Saturation, Hue, Sharpness• Gamma• Colour Temp	

<ul style="list-style-type: none"> • HDR • Advanced Video Settings <ul style="list-style-type: none"> • DNR (Digital Noise Reduction), MPEG NR, Adaptive Luma Control, Game Mode. • Reset To Default 		<ul style="list-style-type: none"> • SafeSearch filter • Block offensive words 		<ul style="list-style-type: none"> • Set time zone • Use 24-hour format 	
Sound	26	Apps	32	Location	36
<ul style="list-style-type: none"> • Sound Style • User Mode Settings: Balance, Treble, Bass, Sound Surround, Speakers, Digital Output, SPDIF Delay, Auto Volume Control, Reset to Default. 		<ul style="list-style-type: none"> • Recently opened apps • See all apps • App permissions • Security & Restrictions 		<ul style="list-style-type: none"> • Location status • Recent location requests 	
Network	28	Inputs	33	Accessibility	37
<ul style="list-style-type: none"> • Wired Network Settings <ul style="list-style-type: none"> • Proxy settings • IP settings • Wireless Network Settings <ul style="list-style-type: none"> • WiFi • Available networks • Add new network • Scanning always available 		<ul style="list-style-type: none"> • Inputs • HDMI control • Device auto power off • TV auto power on • HDMI EDID version • CEC device list 		<ul style="list-style-type: none"> • Captions • High contrast text 	
Accounts and Sign-in	30	Storage	34	Screen Saver	38
<ul style="list-style-type: none"> • Add Google Account • Sync selected apps data • Remove account 		<ul style="list-style-type: none"> • Device storage • Removeable storage 		<ul style="list-style-type: none"> • Screen saver • When to start • Put device to sleep • Start now 	
Google Assistant	31	Power	34	About	39
<ul style="list-style-type: none"> • Searchable apps 		<ul style="list-style-type: none"> • Sleep timer • Picture off • No signal power off 		<ul style="list-style-type: none"> • System update • Restart • Status • Legal information • Version • Software version 	
		Date and Time	35	Remote and accessories	40
		<ul style="list-style-type: none"> • Automatic date and time • Set date • Set time 		High Dynamic Range (HDR)	41

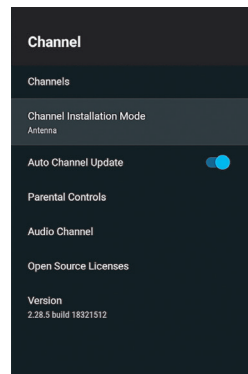
Channels

To access channel settings, navigate from Smart Home > Settings > Channel

Option	Description
Channels	Display the scan sub menus.
Channel Installation Mode	Select channel reception mode. Options: Antenna, Cable, Satellite.
Auto Channel Update	Turn ON/OFF to automatically update DTV channels
Parental Controls	Set parental controls for DTV channels.

Channels sub-menu

Option	Description
Channel scan	Automatically scan for channels
Single RF scan	Manually scan digital channels one frequency at a time.



Picture

To access picture settings, navigate from Smart Home > Settings > Device Preferences > Picture

Picture Mode

Standard : Default picture settings.

Vivid : Enhanced brightness with lower contrast, colour depth and edges for standing out in very bright places such as storefronts.

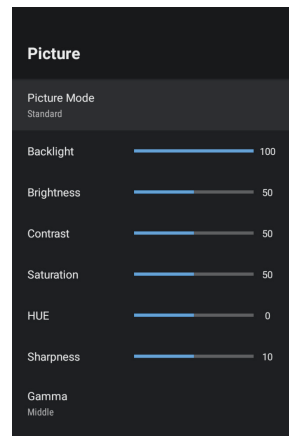
Sport : Settings are optimised for watching sports.

Movie : Settings are optimised for viewing movies.

Game : Settings are optimised for gaming.

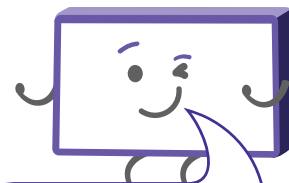
Energy Saving : Settings are optimised for minimal power consumption.

User : Adjust settings to best suit your viewing environment and content.



User Mode settings

Option	Description
Backlight	Adjust the screen brightness by adjusting the backlight. The closer to 100, the brighter the screen.
Brightness	Adjust the overall screen brightness. The closer to 100, the brighter the picture.
Contrast	Adjust the contrast of the bright and dark areas of the picture. The closer to 100, the higher the contrast.
Saturation	Adjust the intensity of the colours. The closer to 100, the deeper the colour.
Hue	Adjust the hue of the picture between red and green tints.
Sharpness	Adjust the sharpness of the picture. The closer to 100, the sharper and clearer the image.



When you adjust backlight/brightness/contrast/saturation/hue/sharpness settings, they get automatically saved under user mode.

Gamma

Adjust the mid level brightness of the picture.

Dark Middle Bright

Colour Temp

Adjust the on-screen colour temperature.

Cool Warm User

In user mode, you can individually adjust white balance by changing R/G/B gain settings.

HDR

Turn HDR On/Off.

Advanced Video

See the table for more information.

Reset to Default

Reset all Picture settings to factory defaults.

Advanced Video Settings

Option	Description
DNR (Digital Noise Reduction)	Reduce screen noise to make the image clean. Options: Off, Low, Medium, Strong, Auto.
MPEG NR	Reduces the noise produced during the creation of digital video signals. Options: Off, Low, Medium, Strong.
Adaptive Luma Control	Automatically adjusts the brightness and contrast after analyzing the input signal. Options: Off, Low, Medium, Strong.
Game Mode	Enhances your gaming experience by reducing game controller delay.

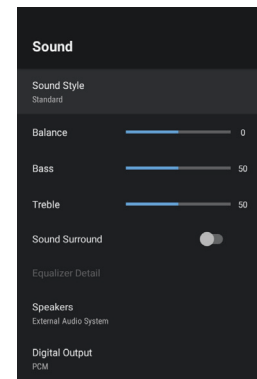


Images are for reference only.

Sound

To access sound settings, navigate from Smart Home > Settings > Device Preferences > Sound

Option	Description
Sound Style	Select your preferred sound mode. User Standard Vivid Sports Movie Music News
Balance	Adjust the balance between the left and right speakers.
Treble	Increase or decrease the treble level.
Bass	Increase or decrease the bass level.
Sound Surround	Turn surround sound effect On/Off.
Speakers	Select which speakers the TV uses for audio output.
Digital output	Select the digital audio output mode. Options: Auto, Bypass, PCM, Dolby Digital Plus, Dolby Digital.



SPDIF Delay

Synchronize the sound from an external home theatre system with the TV picture.

Auto Volume Control

Turn on to set volume to be consistent across programs and channels automatically.

Reset to Default

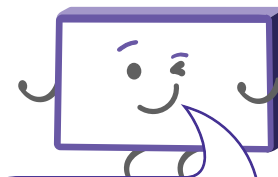
Reset all audio settings to factory defaults.



Network

To access network settings, navigate from Smart Home > Settings > Network & Internet

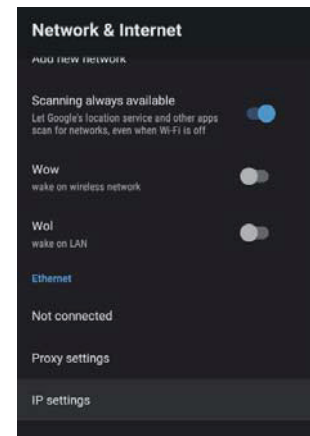
You can set up your TV so that it can access the Internet through your home network using a wired or wireless connection.



Make sure you have an ethernet cable connected to the TV

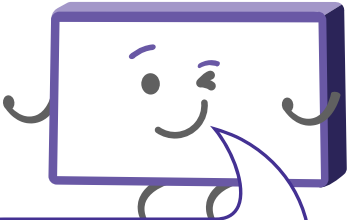
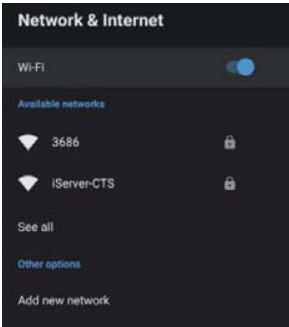
Wired Network Settings

Option	Description
Proxy settings	Manually setup proxy settings.
IP Settings	DHCP: The TV will automatically connect to the networkStatic: Manually assign network settings.



Wireless Network Settings

Option	Description
WiFi	Switch Wireless connectivity On/Off.
Available networks	Select a wireless network to connect to.
Add new network	Manually connect to a Wi-Fi network by entering the name of the Wi-Fi network and password.
Scanning always available	Allow or disallow Google's location service and other apps scan for networks, even when Wi-Fi is off.



Keep it simple for easy setup!
If an item isn't required, just
leave it on the default setting.

Accounts and Sign-in

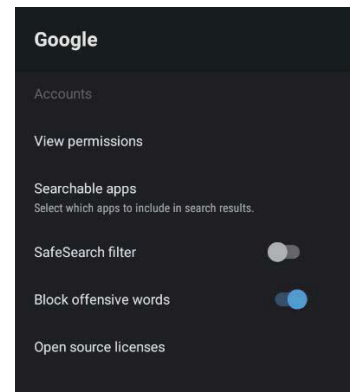
To access account settings, navigate from Smart Home > Settings > Accounts & Sign-in

Option	Description
Add Google Account	Add your Google account to your TV.
Sync selected apps data	Sync application data from previously installed apps.
Remove account	Remove your Google account from your TV.



Google Assistant

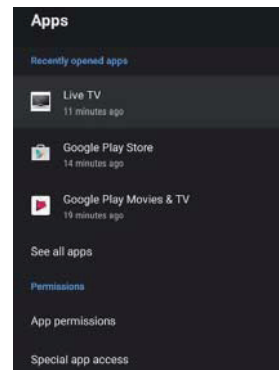
Option	Description
Searchable apps	Select which apps to include in search results.
SafeSearch filter	Enable or Disable SafeSearch filter.
Block offensive words	Enable or Disable the blocking of offensive words



Apps

To access apps settings, navigate from Smart Home > Settings > Apps

Option	Description
Recently opened apps	Displays your most recently opened apps.
See all apps	View all installed apps on your TV.
App permissions	Set app permissions for your installed apps.
Security & Restrictions	Control installation of apps from unknown sources and disallow/warn before installation of apps that may cause harm.



Inputs


Option	Description
Inputs	Select the input source to adjust the input source settings.
HDMI Control	Allow your TV remote to control other devices connected via HDMI.
Device auto power off	Power off connected HDMI devices when you switch off your TV.
TV auto power on	Power on connected HDMI devices when you switch on your TV.
HDMI EDID version	Switch EDID Version, you can select Standard, Enhanced or Auto. Select Enhanced when source signal is transferred by HDMI2.0 specification and Select Standard when source signal is transferred by HDMI1.4 specification. (According to different external devices, the TV can be switched with EDID settings to match the external device EDID.)
CEC device list	Show a list of connected devices that supported CEC (Consumer Electronic Control).



Storage

Option	Description
Device Storage	Display the available internal storage.
Removable storage	Display the available storage on external devices.

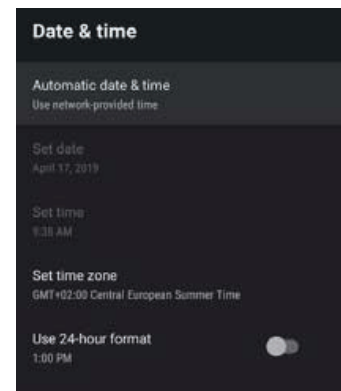
Power



Option	Description
Sleep Timer	<p>Select the desired Auto Sleep (Standby) duration.</p> <p>Options: OFF 10 min 20 min 30 min 40 min 50 min 60 min 90 min 120 min</p>
Picture off	<p>Turn off the screen while sound continues. Press OK button to turn on the screen again.</p>
No Signal Power Off	<p>If there's no input signal nor press-button operation, the TV will enter standby status.</p> <p>Options: OFF 5 min 10 min 15 min 30 min 60 min</p>

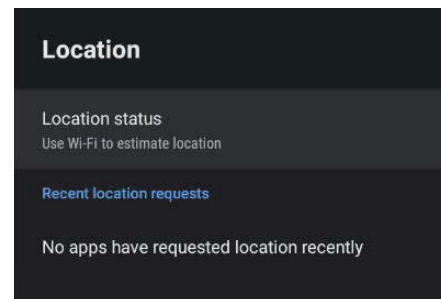
Date and Time

Option	Description
Automatic date and time	Use network provided date and time or enable setting update and time manually.
Set date	Manually set the date.
Set time	Manually set the time.
Set time zone	Set your time zone.
Use 24-hour format	Turn On/Off 24 hour time display.



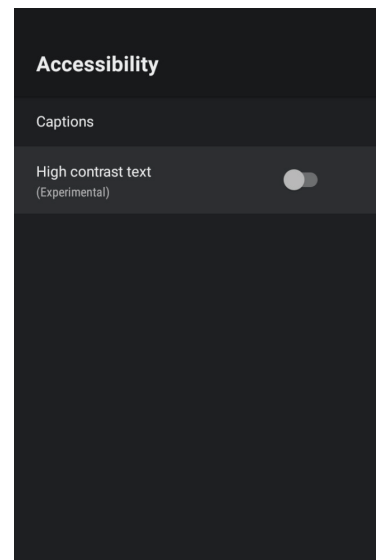
Location

Option	Description
Location status	Select how location is estimated.
Recent location requests	View location requests by apps.



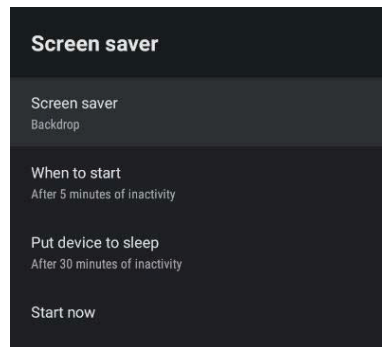
Accessibility

Option	Description
Captions	Enable closed captions, to see audio as text on the screen.
High contrast text	Turn high contrast text On/Off.



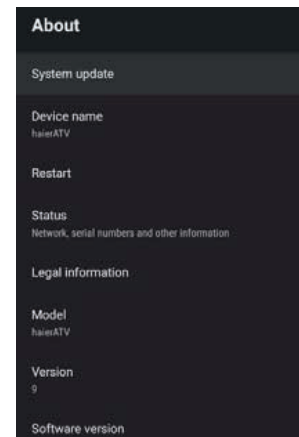
Screen Saver

Option	Description
Screen saver	Select your preferred screen saver
When to start	Set the screen saver start time. Options: 5 min 15 min 30 min 1 hour 2 hours
Put device to sleep	Set the time interval for the TV to go to into standby mode. Options: 30 min 1 hour 3 hours 6 hours 12 hours Never
Start Now	Start the screen saver



About

Option	Description
System update	Check if a system update is available.
Restart	Restart your TV.
Status	View information on IP address, MAC address, Bluetooth address
Legal information	Read up on legal notices and opt out of personalised ads.
Version	View Android version.
Software Version	View TV software information.







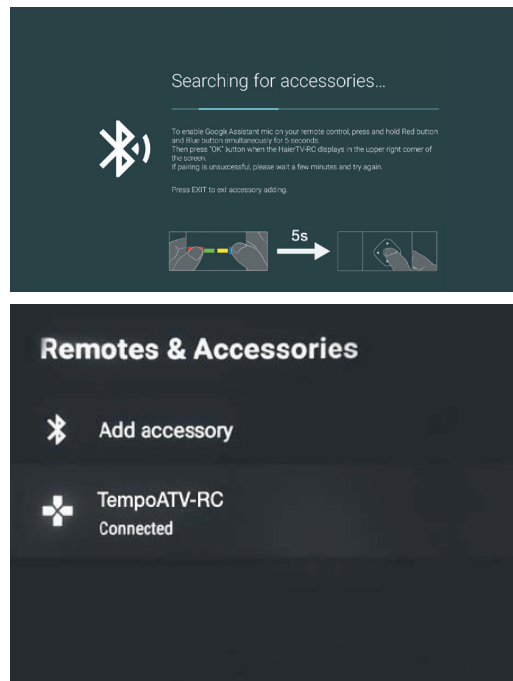
Remote and accessories

To access remote and accessories settings, navigate from Smart Home > Settings > Remote & accessories

In this menu, you can pair Bluetooth devices.

To pair the TV remote:

1. Press the  **RED** and  **BLUE** buttons at the bottom of the remote control for 5 seconds.
2. When "TempoATV-RC" on top right corner of the screen, press the **OK** button to initiate pairing.
3. If the couldn't pair appears, the connection fails. Wait 30 seconds and then press the  **RED** and  **BLUE** buttons at the bottom of the remote control for 5 seconds to repeat the previous steps.
4. Press **EXIT** or **BACK** button return to the previous menu.



High Dynamic Range (HDR)



About the HDR feature

High Dynamic Range (HDR) is a picture feature on your TV that attempts to mimic the way visuals are perceived in real life by the human eye.

By using this feature, the TV can reproduce greater dynamic range of luminosity by capturing and then combining several different exposures.

HDR promises better picture quality thanks to brighter, more realistic highlights, more realistic colour and other improvements.

It delivers the look that the filmmakers intended to achieve, showing the hidden areas of dark shadows and sunlight with full clarity, colour and detail.

HDR on your TV

HDR is supported in HDMI and USB input sources and by Netflix app.






When the TV is displaying HDR media, the information banner (press the INFO button on the remote) will display 'HDR'.

NOTE: When watching HDR content, make sure the Android TV Home > Settings > Device Preferences > Inputs > HDMI EDID version setting is set to EDID 2.0. This requires an HDR playback-capable external media player and HDR optimised media content. Use a High-Speed HDMI cable when connecting to an external media player.

TV Guide

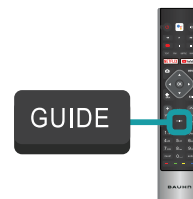
(Free to air TV)

TV Guide Functions

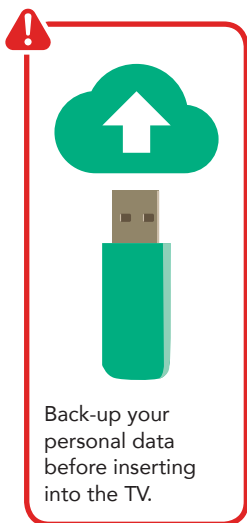
Function	Remote Button
Select a Channel	▲ / ▼
Select a Programme	◀ / ▶
Display programs for the next day	 GREEN
Display programs from previous day	 RED
Filter programs by category	 BLUE
Schedule a program to be recorded	
Exit TV Guide menu	

To access the TV guide, press the Guide button on the remote.

To activate the TV Channels use the ▲ / ▼ buttons to select a channel in the left column, then press **OK** to confirm.



Recording



Important Tips:

- Back-up your personal data before plugging in your USB to the TV. We do not assume liability for any loss of data due to misuse or malfunction.
- You cannot change channels while in recording mode.
- If the signal is interrupted while in recording mode, the recording will stop until the signal is established.
- Do not turn the TV off while it is in time-shift mode.
- The file recorded can only be used on this TV. Do not copy it to any other device.
- When connecting or disconnecting the USB storage device, ensure the TV is not in USB mode, otherwise the USB device or the files stored on it may be damaged.



Before you can record with this TV (including time-shift recording), you must insert your USB storage device into the USB port.



Recording Live TV

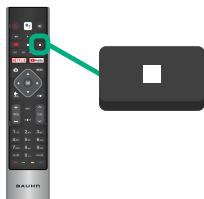
Start Recording



Press **REC** once to start recording.

Stop Recording

Press **STOP** once to stop recording.

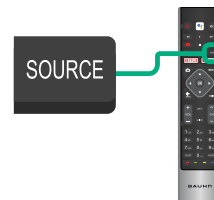


Scheduled recording

See TV Guide Functions on page 42 to schedule recordings. View the list of scheduled recordings, press **MENU** then press the **▼** button to go to the RECORD section then select Schedule List.



Recording, scheduled recording and pause live TV functions only work in DTV mode (free-to-air).



Playback

Press the **MENU** button then press the **▼ DOWN** button to go to Record section, and Record List to display the list of recorded programs.

Use the **▲ / ▼** buttons to select a recorded file.

Press the **OK** button to start playback in Full Screen Mode.

Press **YELLOW** to delete the selected file.



When a program is being recorded in the background (while the TV is in standby mode), the Standby/ON light will flash white.

Pause Live TV (Time-shift)

Temporarily pause the live TV signal, then resume playback at your convenience.



Before you can record with this TV (including time-shift recording), you must insert your USB storage device into the USB port.



Enable Time Shift Mode

Press **MENU** button then press the ▼ button to go to the RECORD section. Select Time Shift Mode and press **OK**.

Press **OK** to turn on Time Shift mode.

Press the || button to set up disk for time shift recording.

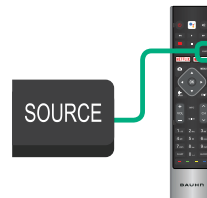
Start Time-shift

Press the || button on the remote to enter time-shift mode.

Press the ► button to resume playing the program.



Recording, scheduled recording and pause live TV functions only work in DTV mode (free-to-air).



Stop Time-shift

Press the ■ STOP button to exit time-shift.



The USB storage device won't retain recorded data after you exit the time-shift function.

Troubleshooting

If you experience problems with your TV, check below for advice. If you don't find a solution here, contact After Sales Support on 1300 886 649.

Problem	Solution
No power	<p>Check the power outlet is turned on.</p> <p>If using a multi-outlet, check if it is working properly. To check whether a power strip is working properly, plug the TV's power plug directly to a wall outlet and observe its operation.</p> <p>Try to power on using the button on your TV set.</p>
Picture issues	<p>Ensure that all equipment is connected properly. If you are using an external device, turn it off, then turn it on again. If it says there is no signal on the screen, choose the correct source input.</p> <p>Adjust the antenna position.</p> <p>Move the TV away from electronic equipment or devices that could cause interference.</p> <p>Auto-tune free-to-air TV channels again.</p> <p>Try another channel.</p> <p>If the image keeps flickering when trying to connect the HDMI cable, make sure the cable is: a high-speed HDMI cable; correctly connected to the port; and not faulty (bent or broken).</p> <p>You can also try going to Adjust Smart Home > Settings > Device Preferences > Inputs > HDMI EDID version</p>
Network connection issues	<p>Turn off the modem and the router (if used). Wait for 2 minutes and then turn them back on.</p> <p>If you are connecting using Wi-Fi, make sure you enter the Wi-Fi password correctly.</p> <p>If you are using a static IP, enter the IP address and other network addresses directly.</p> <p>If you are using an ethernet cable, use one rated CAT 5 or higher. Make sure it is plugged in at both ends.</p> <p>If the problem persists, contact your Internet Service Provider or modem manufacturer.</p>

Problem	Solution
Sound issues	<p>Ensure that the equipment is connected properly.</p> <p>Ensure that the input setting for the TV is correct.</p> <p>Ensure audio settings on the external device are set correctly.</p> <p>Ensure the volume is not muted. If it is, press the MUTE button to restore the sound.</p> <p>If earphones are connected, unplug them.</p> <p>Adjust the volume to a suitable level by pressing the VOL+ / VOL- button.</p> <p>Adjust the HDMI EDID version. This can be found under Smart Home > Settings > Device Preferences > Inputs > HDMI EDID version.</p> <p>If you are using an external audio device, check that the Smart Home > Settings > Sound > Digital Output Setting is 'PCM'.</p> <p>If you are using an external audio device via an HDMI cable, make sure the audio device supports HDMI-ARC.</p> <p>If the external speaker sound is not synchronised with the TV picture, go to Smart Home > Settings > Sound > SPDIF Delay and adjust the sync.</p>
No operations can be performed with the remote control unit	<p>Check the batteries are correctly installed.</p> <p>The batteries may be exhausted: replace them.</p> <p>Make sure to point the remote control at the remote control sensor and try it again.</p> <p>Make sure to use the remote control at a distance of no more than 5m from the sensor.</p> <p>Remove any obstacles between the remote control and remote control sensor.</p>
Button operation is not effective (unit and/or remote control)	<p>Disconnect the power plug and then reconnect it. (The unit may not be operating properly due to lightning, static electricity or other factors.)</p>



Specifications

Resolution		3840 x 2160
Refresh rate		60Hz
Aspect ratio		16:9
USB output		DC 5V 500mA
Power source		100-240V~, 50/60Hz
Power consumption		220W
Dimensions (W x D x H)		With stand: 1461 x 205 x 904 mm
		Without stand: 1461 x 77 x 843 mm
Weight	Net	24.25kg
	Gross	30kg

For Technical and Warranty Support

1300 886 649

www.tempo.org

info@tempo.org

Distributed by Tempo (Aust) Pty Ltd,
PO Box 6056, Frenchs Forest DC 2086



Compliance and Responsible Disposal



Packaging

The packaging of your product has been selected from environmentally friendly materials and can usually be recycled. Please ensure these are disposed of correctly. Plastic wrapping can be a suffocation hazard for babies and young children, please ensure all packaging materials are out of reach and are safely disposed of. Please recycle these materials rather than throwing them away.



Product

At the end of its working life, do not throw this product out with your household rubbish.

An environmentally friendly method of disposal will ensure that valuable raw materials can be recycled. Electrical and electronic items contain materials and substances which, if handled or disposed of incorrectly, could potentially be hazardous to the environment and human health.

Compliance

This product complies with the Australian Safety Standard AS/NZS 60065 to ensure the safety of the product.



National Television and Computer Recycling Scheme

The careful disposal of e-waste is important because many televisions and computers contain materials which are hazardous to people and the environment. There are no fees for householders or small businesses disposing of e-waste at a scheme collection service.

Individuals can contact their local council for information on local e-waste management services, find scheme services listed on Planet Ark's website at www.recyclingnearyou.com.au, or call Planet Ark on 1300 733 712.

Trademark acknowledgements

Google, Android TV and Google Play are trademarks of Google LLC.





Warranty Information

The product is guaranteed to be free from defects in workmanship and parts for a period of 12 months from the date of purchase. Defects that occur within this warranty period, under normal use and care, will be repaired, replaced or refunded at our discretion, solely at our option with no charge for parts and labour. The benefits conferred by this warranty are in addition to all rights and remedies in respect of the product that the consumer has under the Competition and Consumer Act 2010 and similar state and territory laws.

Our goods come with guarantees that cannot be excluded under the Australian Consumer Law. You are entitled to a replacement or refund for a major failure and to compensation for any other reasonably foreseeable loss or damage. You are also entitled to have the goods repaired or replaced if the goods fail to be of acceptable quality and the failure does not amount to a major failure.





Repair and Refurbished Goods or Parts Notice

Unfortunately, sometimes faulty products are manufactured, which need to be returned to the supplier for repair.

Please be aware that if your product is capable of retaining user-generated data (such as files stored on a computer hard drive, telephone numbers stored on a mobile telephone, songs stored on a portable media player, games saved on a games console or files stored on a USB memory stick) during the process of repair, some or all of your stored data may be lost. We recommend you save this data elsewhere prior to sending the product for repair.

You should also be aware that rather than repairing goods, we may replace them with refurbished goods of the same type or use refurbished parts in the repair process.

Please be assured though, refurbished parts or replacements are only used where they meet ALDI's stringent quality specifications.

If at any time you feel your repair is being handled unsatisfactorily, you may escalate your complaint. Please telephone us on 1300 886 649 or write to us at:

Tempo (Aust) Pty Ltd ABN 70 106 100 252
PO Box 6056, Frenchs Forest, NSW 2086, Australia
Telephone: 1300 886 649 (Aust) - Fax: (02) 8977 3765
Tempo Help Desk: 1300 886 649 (Aust)
(Operating Hours: Mon-Fri 8:30am-6pm; Sat 9am-6pm AEST)
Email: info@tempo.org



Online support

Visit www.bauhn.com.au for software updates to keep your TV up-to-date, as well as the latest User Manual for information on the updated features.

Warranty returns

Should you for any reason need to return this product for a warranty claim, make sure to include all accessories with the product.

Product does not work?

If you encounter problems with this product, or if it fails to perform to your expectations, please contact our After Sales Support Centre on 1300 886 649 before returning it to the store for a refund.