

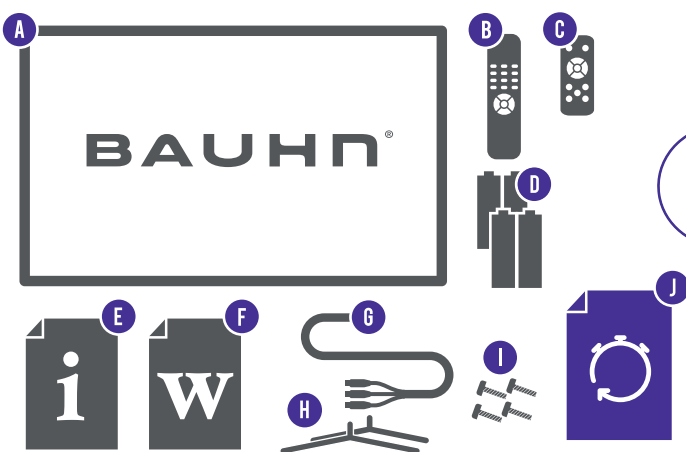
Quick Start Guide

Model: ATV55UHDS-0519



Hey!
Let's get your new TV
ready to use, fast!

1 Have you got everything?



See the box flap for how to handle the TV without damaging it!

You will also need:

- Phillips-head screwdriver
- Someone to help lift the TV

Unpack the box (be gentle) and make sure all of these items are there:

- | | | |
|-----------------------------------|-----------------------|----------------------------|
| A. TV | E. Instruction Manual | H. TV Stands (2) |
| B. Remote Control | F. Warranty Card | I. Screws for TV Stand (4) |
| C. Easy Remote Control | G. Mini AV Cable | J. Quick Start Guide |
| D. AAA Activ Energy Batteries (4) | | |

2 Attach the TV stand

Unless you are wall-mounting the TV, you will need to attach its stand/legs. If you do want to wall mount the TV, see page 7 of the Instruction Manual.

Lay the TV face-down on a soft, flat surface (like the sofa, or a towel on a table).

See the 'L' and 'R' markings on the stand? Match them to the installation points on the back of the TV.

Attach the stand to the TV at the installation points using the screws provided. (Grab a screwdriver for this bit).

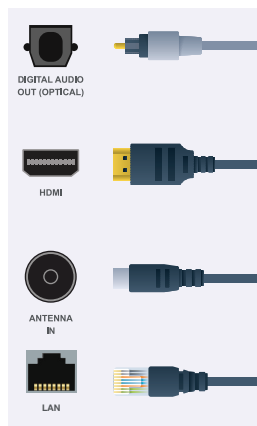
This TV is heavy!
We recommend asking someone to help you lift it.

3 Which plug goes where?

Want to hook up your new TV to the internet, a DVD player or something else? Use the basic guide below to see what the plug and port should look like for different connections.

You can find more of these on pages 10 - 11 of the Instruction Manual.

(These cables do not come with your TV, however we have included a Mini AV cable for you.)



Use this to connect your soundbar, amplifier, digital receiver, or other external audio equipment.

Use this connection for a DVD player, gaming console, computer and camera. (If your device doesn't have HDMI, you can use the Mini AV cable provided with your TV.)

To watch free-to-air TV channels, you need an antenna connection.

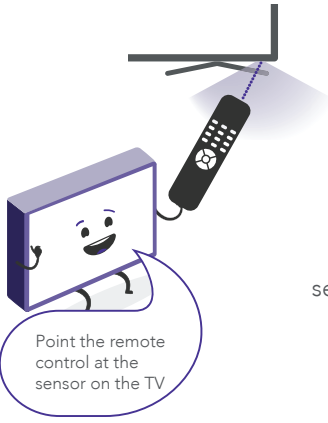
Use this cable to connect the TV to your modem for internet access. This TV also has Wi-Fi connectivity.



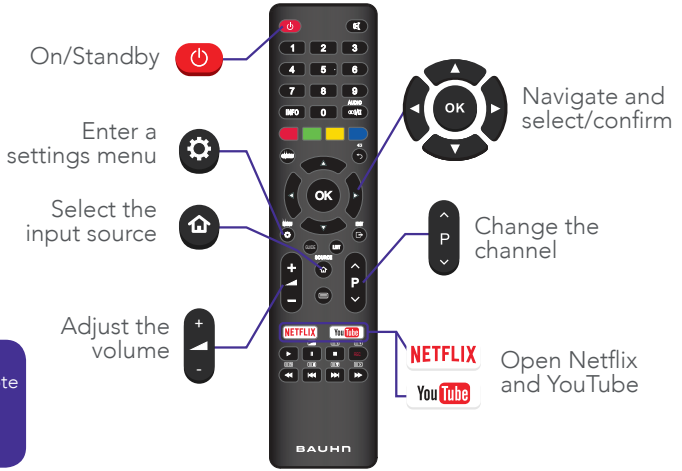
4

Get to know the remote

Familiarise yourself with the remote control - you'll be spending a lot of time together.
Here are some of the buttons you'll be using most often.

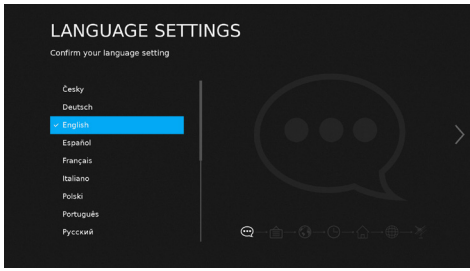


Prefer to keep things simple? We've also included an Easy Remote with only the essential buttons. See page 16 of the Instruction Manual for more info.

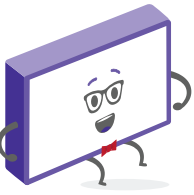
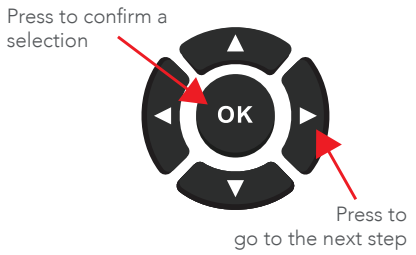


On-screen set-up

5



Follow the on-screen set-up prompts to set your country and language, read and accept the license agreement, connect the TV to the internet, and tune TV channels.



?

Uh-oh, this isn't right...

Set-up not going smoothly? We've got you!
We just need you to check a few things first:

⚡

Is it plugged in?

A new TV is exciting! So it's easy to forget something simple - like plugging it into the power outlet. Psst... make sure the outlet is switched ON.

i

Look at the manual!

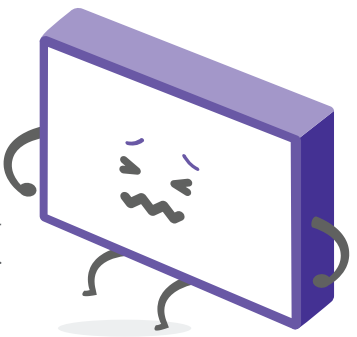
More often than not, the answer you need is right there in the Instruction Manual. The troubleshooting section on pages 48 - 50 may come in handy for tricky stuff.

☎

Ok, time to give us a call

What? You mean the Instruction Manual didn't have ALL the answers? Speak to us! We'd love to help you get up and running as quickly as possible. Call our **After Sales Support** on **1300 886 649**.

Operating hours: Monday-Friday, 8:30am-6pm; Saturday, 9am-6pm AEST



Your new TV is ready to enjoy!

Well done, you made it.
Now sit back and relax... your new TV is automatically covered by a 1-year warranty. How nice!

