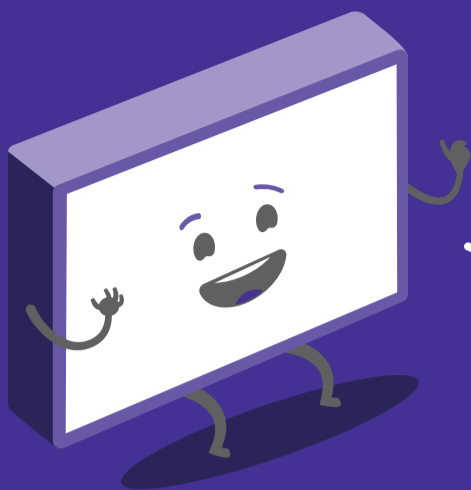


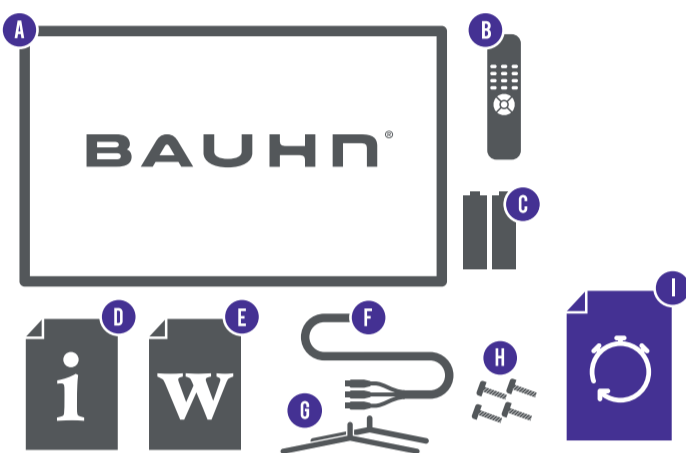
Quick Start Guide

Model: ATV45FHD-0319



Hey!
Let's get your new TV
ready to use, fast!

1 Have you got everything?



You will also need:

- Phillips-head screwdriver
- Someone to help lift the TV

Unpack the box (be gentle) and make sure all of these items are there:

- | | | |
|-----------------------------------|-----------------------|----------------------------|
| A. TV | D. Instruction Manual | G. TV Stands (2) |
| B. Remote Control | E. Warranty Card | H. Screws for TV Stand (4) |
| C. AAA Activ Energy Batteries (2) | F. AV Cable | I. Quick Start Guide |

2 Attach the TV stand

Unless you are wall-mounting the TV, you will need to attach its stand/legs. If you do want to wall mount the TV, see page 14 of the Instruction Manual.

Lay the TV face-down on a soft, flat surface (like the sofa, or a towel on a table).

See the 'L' and 'R' markings on the stand? Match them to the installation points on the underside of the TV.

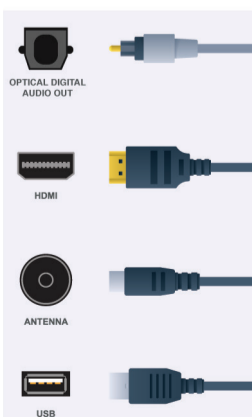
NOTE: The longer part of the leg must be facing forward.

Attach the stand to the TV at the installation points using the screws provided. (Grab a screwdriver for this bit).

This TV is bulky!
We recommend asking someone to help you lift it.

3 Which plug goes where?

Want to hook up your new TV to a DVD player or something else? Use the basic guide below to see what the plug and port should look like for different connections. You can find more of these on page 17 of the Instruction Manual.



Use this to connect your soundbar, amplifier, digital receiver, or other external audio equipment.

Use this connection for a DVD player, gaming console, computer and camera.

To watch free-to-air TV channels, you need an antenna connection.

Connect a USB device, or plug in your USB storage device to play its contents on your TV.

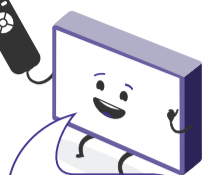
(These cables do not come with your TV).



4 Get to know the remote

Familiarise yourself with the remote control - you'll be spending a lot of time together.

Here are some of the buttons you'll be using most often.



Point the remote control at the sensor on the TV

On/Standby



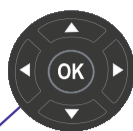
Enter a settings menu



Select the input source



Adjust the volume



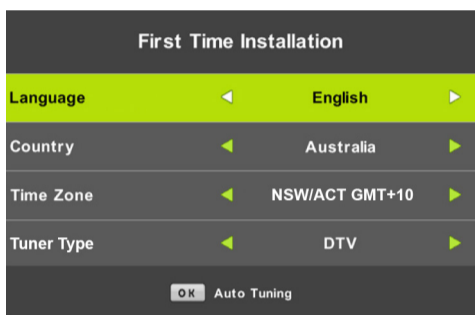
Navigate and select/confirm



Change the channel

5 On-screen set-up

This TV is clever enough to scan and automatically tune to all available free-to-air channels. Easy!



Once you've turned on your TV for the first time and you see the screen shown above, press the OK button on the remote control to start Auto Tuning all of the available TV channels. (Users that are not in NSW/ACT may also need to adjust the time zone - but that's it, promise.)

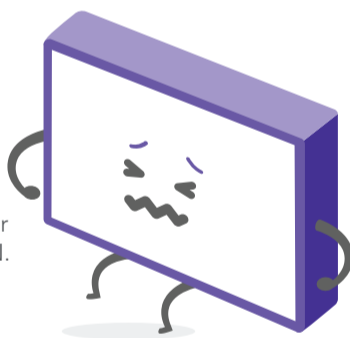
? Uh-oh, this isn't right...

Set-up not going smoothly? We've got you!

We just need you to check a few things first:

🔌 Is it plugged in?

A new TV is exciting! So it's easy to forget something simple - like plugging it into the power outlet. Psst... make sure the outlet is switched ON.



i Look at the manual!

More often than not, the answer you need is right there in the Instruction Manual. The troubleshooting section on pages 43-44 may come in handy for tricky stuff.

📞 Ok, time to give us a call

What? You mean the Instruction Manual didn't have ALL the answers? Speak to us! We'd love to help you get up and running as quickly as possible. Call our **After Sales Support** on **1300 886 649**.

Operating hours: Monday-Friday, 8:30am-6pm; Saturday, 9am-6pm AEST

Your new TV is ready to enjoy!

Well done, you made it.

Now sit back and relax... your new TV is automatically covered by a 1-year warranty. How nice!

