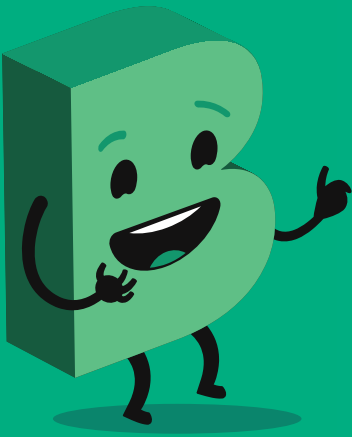


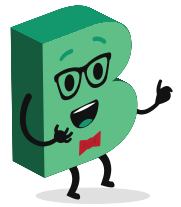
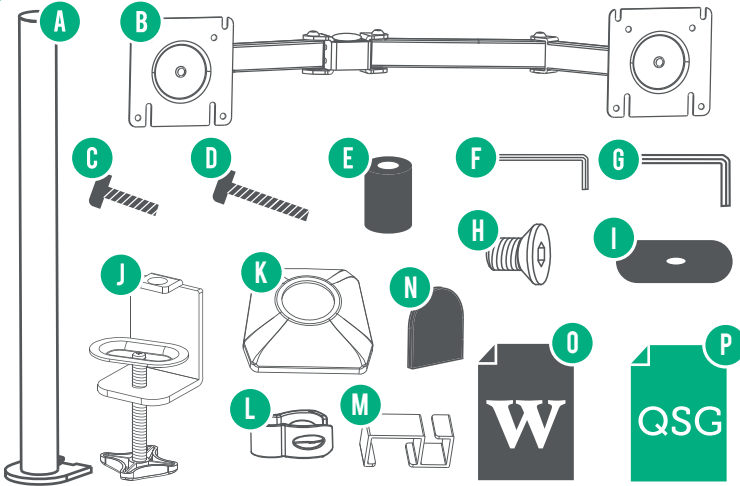
# Quick Start Guide

Model: AMAB-0619-D



Hey!  
Let's get your new monitor  
bracket ready to use, fast!

## 1 Have you got everything?

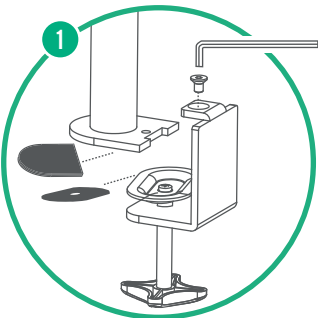


You will also need  
a Phillips-head  
screwdriver  
to secure your  
monitors to the  
bracket

Unpack the box (be gentle) and make sure all of these items are there:

- |                          |                        |                        |                                 |
|--------------------------|------------------------|------------------------|---------------------------------|
| A. Pole                  | E. Screw spacers (x16) | I. Bracket clamp cover | M. Monitor arm cable clips (x4) |
| B. Monitor arms          | F. 4mm hex key         | J. Bracket clamp       | N. Pole cover                   |
| C. M4 x 8mm screws (x8)  | G. 5mm hex key         | K. Pole cover          | O. Warranty Card                |
| D. M4 x 16mm screws (x8) | H. Cap screw           | L. Pole cable clip     | P. Quick Start Guide            |

## 2 Attach to your desk (mounting to edge of desk)



Adhere the bracket clamp cover to the support block  
and attach the clamp to the base with the cap screw.  
Use the 4mm hex key to tighten.

Tighten the bracket clamp from beneath by turning  
the adjuster clockwise and make sure it's tight.  
Slide the base cover on and clip into place.



Be careful not to overtighten the clamp or you  
might cause surface damage to your desk or table

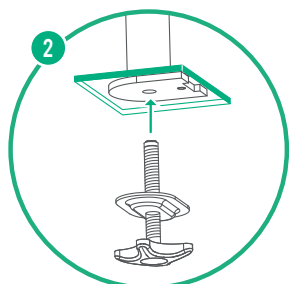
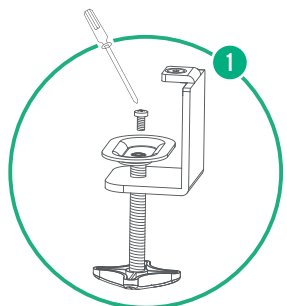
## 3 Attach to your desk (mounting to desk cable opening)

Remove the screw from the bracket clamp in order  
to remove the tightening bolt completely from the  
clamp. Put the screw back in.

Place the pole in position and screw in the clamp from  
below. Tighten the securing screw from beneath by  
turning the adjuster clockwise and make sure it's tight.



Be careful not to overtighten the clamp or you  
might cause surface damage to your desk or table



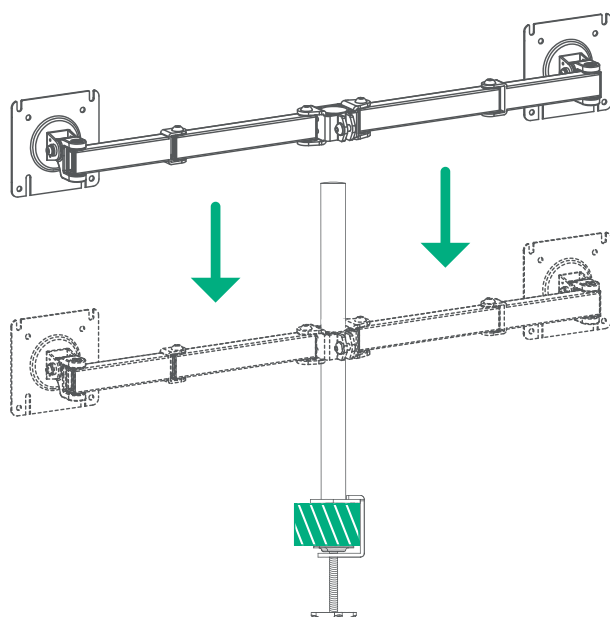
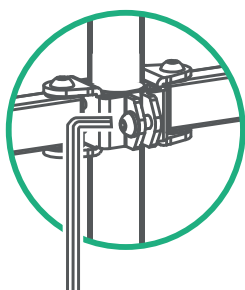
Nearly done! Just a bit more on  
the other side of this page...

4

## Attaching the Arm

Slide the bracket arms onto the pole. Slide up or down to adjust the height of where your monitors will sit.

Tighten into position at the back, using the supplied 5mm hex key.



This bracket can handle monitors that weigh 8kg each or less!

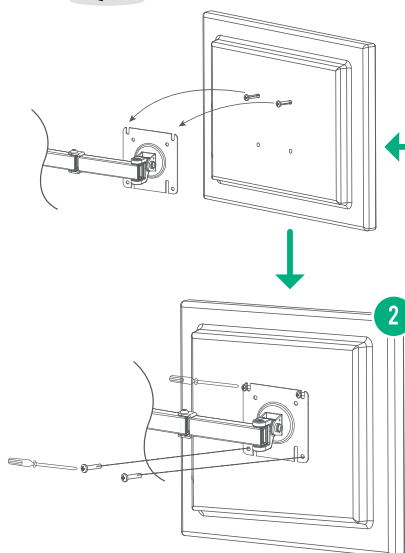
## Mount your monitors

5

Install the upper two screws but don't screw them completely just yet. Hang the monitor on the mounting plate.

Install the lower two screws. Now you can fasten the upper two screws all the way.

If your monitor is 75 x 75mm mounting pattern, flip the monitor mounting plate and install onto the narrower channel and VESA holes.



6

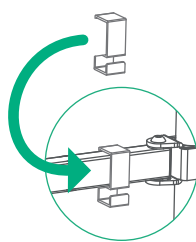
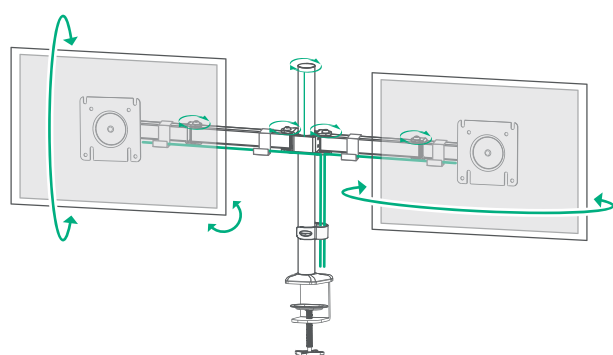
## Adjust to your space

It's important to make your workspace as ergonomic as possible.

This bracket allows you to adjust the height, tilt and swivel of your monitor's position, so that it's truly fitted to your space and sitting.

To lock in your adjusted position, you will need to tighten the bolts on the mounting plate and arms using the supplied 5mm hex key.

You can tuck away those unsightly cables into the bracket arm itself. Clip them into place as shown.



## Give us a call

What? You mean this Quick Start Guide didn't have ALL the answers? Speak to us! We'd love to help you get up and running as quickly as possible. Call our **After Sales Support** on **1300 886 649**.

Operating hours: Monday-Friday, 8:30am-6pm; Saturday, 9am-6pm AEST



## Your new Monitor Bracket is ready to enjoy!

Well done, you made it.  
Now sit back and relax... your new monitor bracket is automatically covered by a 1-year warranty.  
How nice!

